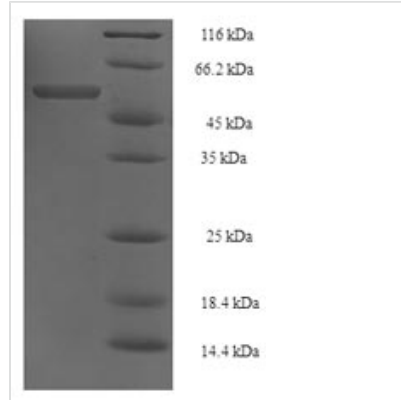




Recombinant *Acinetobacter baumannii* Elongation factor Tu (tuf1)

Product Code	CSB-EP025342AUD
Relevance	This protein promotes the GTP-dependent binding of aminoacyl-tRNA to the A-site of ribosomes during protein biosynthesis.
Abbreviation	Recombinant <i>Acinetobacter baumannii</i> tuf1 protein
Storage	The shelf life is related to many factors, storage state, buffer ingredients, storage temperature and the stability of the protein itself. Generally, the shelf life of liquid form is 6 months at -20°C/-80°C. The shelf life of lyophilized form is 12 months at -20°C/-80°C.
Uniprot No.	A3M1F6
Product Type	Recombinant Protein
Immunogen Species	<i>Acinetobacter baumannii</i> (strain ATCC 17978 / CIP 53.77 / LMG 1025 / NCDC KC755 / 5377)
Purity	≥ 90% as determined by SDS-PAGE.
Sequence	MAKAKFERNKPHVNVGTIGHVDHGKTTLTAAIATICAITYGGGEAKDYSQIDSAP EEKARGITINTSHVEYDSPTRHYAHVDCPGHADYVKNMITGAAQMDGAILVCA ATDGPMPQTRHILLSRQVGVPYIIVFLNKCDLVDDEELLELVEMEVRELLSTY DFPGDDTPVIRGSALAALNGEAGPYGEESVLALVAALDSYIPEPERAIDKAFLM PIEDVFSISGRGTVVVTGRVEAGIIVKVGEEVEIVGIKDTVKTTVTGVEMFRKLLDE GRAGENCGILLRGTKREEVQRGQVLAKPGTIKPHTKFDAEVYVLSKEEGGRHT PFLNGYRPQFYFRITTDVTGAIQLKEGVEMVMPGDNVEMSVELIHPIAMDPGLR FAIREGGRTVGAGVVAKVTA
Research Area	Others
Source	E.coli
Target Names	tuf1
Expression Region	1-396aa
Notes	Repeated freezing and thawing is not recommended. Store working aliquots at 4°C for up to one week.
Tag Info	N-terminal 6xHis-SUMO-tagged
Mol. Weight	58.9kDa
Protein Length	Full Length
Image	



(Tris-Glycine gel) Discontinuous SDS-PAGE (reduced) with 5% enrichment gel and 15% separation gel.

Reconstitution

We recommend that this vial be briefly centrifuged prior to opening to bring the contents to the bottom. Please reconstitute protein in deionized sterile water to a concentration of 0.1-1.0 mg/mL. We recommend to add 5-50% of glycerol (final concentration) and aliquot for long-term storage at $-20^{\circ}\text{C}/-80^{\circ}\text{C}$. Our default final concentration of glycerol is 50%. Customers could use it as reference.

Shelf Life

The shelf life is related to many factors, storage state, buffer ingredients, storage temperature and the stability of the protein itself. Generally, the shelf life of liquid form is 6 months at $-20^{\circ}\text{C}/-80^{\circ}\text{C}$. The shelf life of lyophilized form is 12 months at $-20^{\circ}\text{C}/-80^{\circ}\text{C}$.