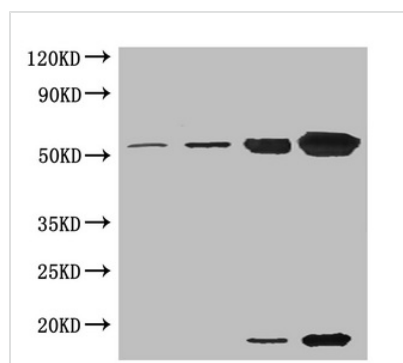




# RuBisCO Antibody

<b>Product Code</b>	CSB-PA00170E0Rb
<b>Storage</b>	Upon receipt, store at -20°C or -80°C. Avoid repeated freeze.
<b>Uniprot No.</b>	P10871
<b>Immunogen</b>	Ribulose-1,5-bisphosphate carboxylase oxygenase (Native Protein)
<b>Raised In</b>	Rabbit
<b>Species Reactivity</b>	Spinach
<b>Tested Applications</b>	ELISA, WB; Recommended dilution: WB:1:1000-1:5000
<b>Form</b>	Liquid
<b>Conjugate</b>	Non-conjugated
<b>Storage Buffer</b>	Preservative: 0.03% Proclin 300 Constituents: 50% Glycerol, 0.01M PBS, PH 7.4
<b>Purification Method</b>	>95%, Protein G purified
<b>Isotype</b>	IgG
<b>Clonality</b>	Polyclonal
<b>Product Type</b>	Polyclonal Antibody
<b>Immunogen Species</b>	Spinach
<b>Research Area</b>	Others
<b>Target Names</b>	N/A

## Image



### Western blot

All lanes: Ribulose-1,5-bisphosphate carboxylase oxygenase antibody at 5µg/ml  
 Lane 1: Ribulose-1,5-bisphosphate carboxylase oxygenase at 0.01µg/ml  
 Lane 2: Ribulose-1,5-bisphosphate carboxylase oxygenase at 0.1µg/ml  
 Lane 3: Ribulose-1,5-bisphosphate carboxylase oxygenase at 1µg/ml  
 Lane 4: Ribulose-1,5-bisphosphate carboxylase oxygenase at 10µg/ml

### Secondary

Goat polyclonal to rabbit IgG at 1/15000 dilution  
 Predicted band size: 55, 14 kDa  
 Observed band size: 55, 14 kDa