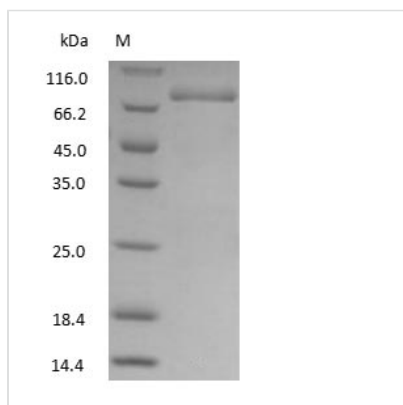




# Sheep Transferrin

<b>Product Code</b>	CSB-NP008601sh
<b>Relevance</b>	Transferrin concentration and total iron binding capacity (TIBC) are currently used to assess iron status. Although correlation between TIBC and transferrin is generally considered as good, conversion factors between the two analytes found in literature show large differences. Although the price per test is lower for TIBC, there are a number of analytical advantages of serum transferrin.
<b>Storage</b>	Aliquot and store at -20°C or -80°C. Avoid repeated freeze/thaw cycles.
<b>Tested Applications</b>	ELISA, WB, SDS-PAGE
<b>Form</b>	Liquid
<b>Storage Buffer</b>	PBS, pH 7.4
<b>Alias</b>	N/A
<b>Product Type</b>	Native Protein
<b>Sensitivity</b>	Not test
<b>Purity</b>	>95% (SDS-PAGE)
<b>Sequence</b>	Full length protein
<b>Research Area</b>	Cardiovascular
<b>Source</b>	purified from Sheep serum
<b>Protein Names</b>	Sheep Transferrin

## Image



(Tris-Glycine gel) Discontinuous SDS-PAGE (reduced) with 5% enrichment gel and 15% separation gel.