

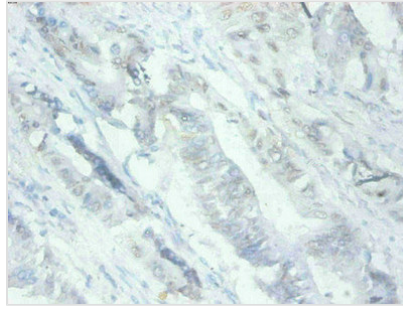


MFGE8 Monoclonal Antibody

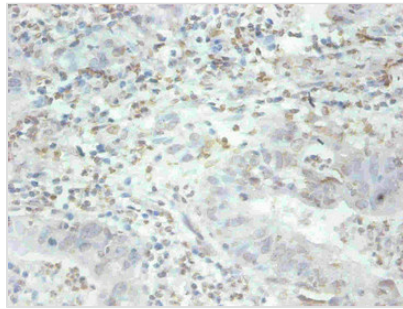
Product Code	CSB-MA079741A0m
Storage	Upon receipt, store at -20°C or -80°C. Avoid repeated freeze.
Uniprot No.	Q08431
Immunogen	Recombinant Human MFGE8 protein
Raised In	Mouse
Species Reactivity	Human
Tested Applications	ELISA,IHC;Recommended dilution:IHC:1:50-1:500
Relevance	<p>Human MFGE8(milk fat globule-EGF factor 8;also lactadherin, breast epithelial antigen BA46, and medin) is a 46 kDa, secreted, monomeric glycoprotein that is associated with the human milk fat globule (HMFG) membrane.It is expressed by mammary epithelial cell surfaces, artery media, and in several carcinomas .Human MGFE8 is synthesized as a 387 amino acid (aa) precursor that contains a 23 aa signal sequence and a 364 aa mature region. The mature molecule contains four Nlinked glycosylation sites, an aminoterminal EGF like domain, plus C1 and C2 Igl like domains which are related to discoidin I and homologous to those of human coagulation factors V and VIII . Within the EGF like domain is an ArgGlyAsp(RGD) sequence, which is strategically placed in a hairpin loop between two antiparallel beta strands. In this way, the EGFl like domain serves as a scaffold for the RGD sequence, which is proposed to promote cell adhesion by binding cell surface integrin receptors, such as $\alpha 5 \beta 1$. Human MFGE8 shares 59%, 58%, 56%, and 52% aa sequence identity with porcine, bovine, rat, and mouse MFGE8, respectively. Functionally, MFGE8 in milk is reported to block rotavirus infection . MFGE8 expression by macrophages promotes the phagocytosis of apoptotic thymocytes by forming a bridge between phosphatidylserine on apoptotic cells, and $\alpha 5 \beta 1$ integrin on phagocytes . The MFGE8 expression by macrophages controls the accumulation of apoptotic membrane fragments in atherosclerotic plaques and substantially limits lesion development .</p>
Form	liquid
Conjugate	Non-conjugated
Storage Buffer	Preservative: 0.03% Proclin 300Constituents: 50% Glycerol, 0.01M PBS, PH 7.4
Purification Method	>95%,Protein G purified
Isotype	IgG2b
Clonality	monoclonal
Product Type	Monoclonal Antibody
Immunogen Species	Homo sapiens (Human)
Target Names	MFGE8
Clone No.	2B2D10



Image



Immunohistochemical of paraffin-embedded human Colon cancer tissues using CSB-MA079741A0m at dilution of 1:200



Immunohistochemical of paraffin-embedded human breast cancer tissue using CSB-MA079741A0m at dilution of 1:200

Usage

For Research Use Only. Not for use in diagnostic or therapeutic procedures.