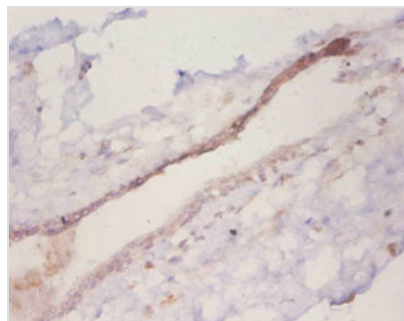




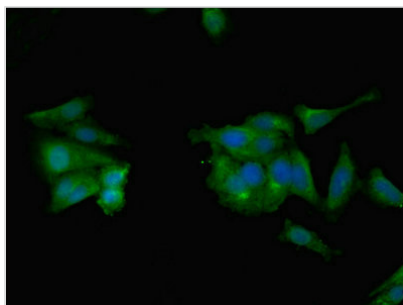
# CCL2 Antibody

|                            |  |
|----------------------------|--|
| <b>Product Code</b>        | CSB-PA05864A0Rb  |
| <b>Storage</b>             | Upon receipt, store at -20°C or -80°C. Avoid repeated freeze.  |
| <b>Uniprot No.</b>         | P13500   |
| <b>Immunogen</b>           | Recombinant Human C-C motif chemokine 2 protein (24-99AA)  |
| <b>Raised In</b>           | Rabbit   |
| <b>Species Reactivity</b>  | Human  |
| <b>Tested Applications</b> | ELISA, IHC, IF; Recommended dilution: IHC:1:20-1:200, IF:1:50-1:200  |
| <b>Form</b>                | Liquid   |
| <b>Conjugate</b>           | Non-conjugated   |
| <b>Storage Buffer</b>      | Preservative: 0.03% Proclin 300<br>Constituents: 50% Glycerol, 0.01M PBS, PH 7.4   |
| <b>Purification Method</b> | >95%, Protein G purified   |
| <b>Isotype</b>             | IgG  |
| <b>Clonality</b>           | Polyclonal   |
| <b>Alias</b>               | C-C motif chemokine 2 (HC11) (Monocyte chemoattractant protein 1) (Monocyte chemotactic and activating factor) (MCAF) (Monocyte chemotactic protein 1) (MCP-1) (Monocyte secretory protein JE) (Small-inducible cytokine A2), CCL2, MCP1 SCYA2 |
| <b>Immunogen Species</b>   | Homo sapiens (Human)   |
| <b>Research Area</b>       | Immunology   |
| <b>Target Names</b>        | CCL2   |

## Image



Immunohistochemistry of paraffin-embedded human mammary gland tissue using CSB-PA05864A0Rb at dilution of 1:50



Immunofluorescent analysis of HeLa cells using CSB-PA05864A0Rb at dilution of 1:100 and Alexa Fluor 488-conjugated AffiniPure Goat Anti-Rabbit IgG(H+L)

---

**Usage**

For Research Use Only. Not for use in diagnostic or therapeutic procedures.