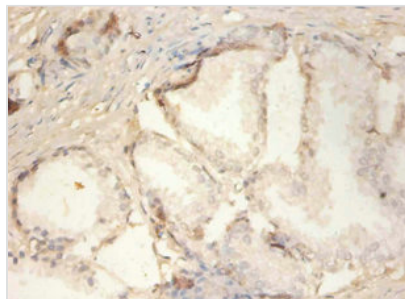




# PLA2G2A Antibody

<b>Product Code</b>	CSB-PA11209A0Rb
<b>Storage</b>	Upon receipt, store at -20°C or -80°C. Avoid repeated freeze.
<b>Uniprot No.</b>	P14555
<b>Immunogen</b>	Recombinant Human Phospholipase A2, membrane associated protein (21-144AA)
<b>Raised In</b>	Rabbit
<b>Species Reactivity</b>	Human
<b>Tested Applications</b>	ELISA, IHC; Recommended dilution: IHC:1:20-1:200
<b>Form</b>	Liquid
<b>Conjugate</b>	Non-conjugated
<b>Storage Buffer</b>	Preservative: 0.03% Proclin 300 Constituents: 50% Glycerol, 0.01M PBS, PH 7.4
<b>Purification Method</b>	>95%, Protein G purified
<b>Isotype</b>	IgG
<b>Clonality</b>	Polyclonal
<b>Alias</b>	Phospholipase A2, membrane associated (EC 3.1.1.4) (GIIC sPLA2) (Group IIA phospholipase A2) (Non-pancreatic secretory phospholipase A2) (NPS-PLA2) (Phosphatidylcholine 2-acylhydrolase 2A), PLA2G2A, PLA2B PLA2L RASF-A
<b>Immunogen Species</b>	Homo sapiens (Human)
<b>Research Area</b>	Cardiovascular
<b>Target Names</b>	PLA2G2A

## Image



Immunohistochemistry of paraffin-embedded human prostate tissue using CSB-PA11209A0Rb at dilution of 1:100