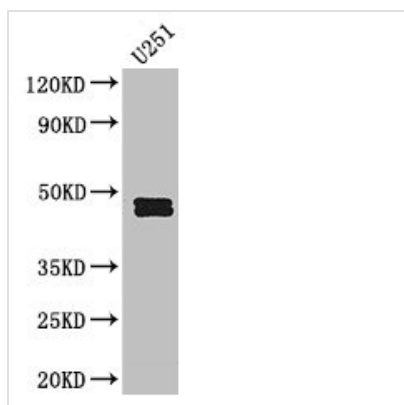




SERPINE1 Antibody

Product Code	CSB-PA11239A0Rb
Storage	Upon receipt, store at -20°C or -80°C. Avoid repeated freeze.
Uniprot No.	P05121
Immunogen	Recombinant Human Plasminogen activator inhibitor 1 protein (24-398AA)
Raised In	Rabbit
Species Reactivity	Human
Tested Applications	ELISA, WB, IHC, IF; Recommended dilution: WB:1:500-1:5000, IHC:1:20-1:200, IF:1:50-1:200
Form	Liquid
Conjugate	Non-conjugated
Storage Buffer	Preservative: 0.03% Proclin 300 Constituents: 50% Glycerol, 0.01M PBS, PH 7.4
Purification Method	>95%, Protein G purified
Isotype	IgG
Clonality	Polyclonal
Alias	Plasminogen activator inhibitor 1 (PAI) (PAI-1) (Endothelial plasminogen activator inhibitor) (Serpine E1), SERPINE1, PAI1 PLANH1
Immunogen Species	Homo sapiens (Human)
Research Area	Cardiovascular
Target Names	SERPINE1

Image



Western Blot

Positive WB detected in: U251 whole cell lysate

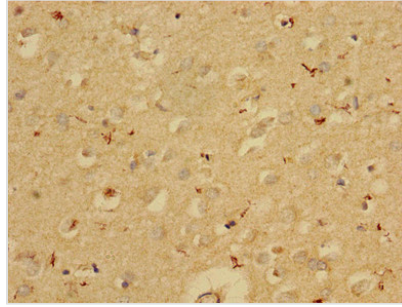
All lanes: SERPINE1 antibody at 2.5µg/ml

Secondary

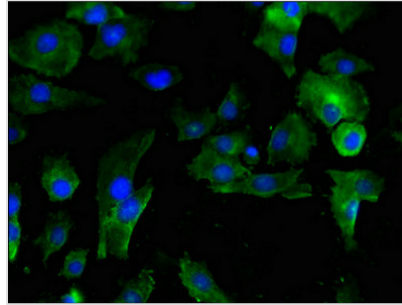
Goat polyclonal to rabbit IgG at 1/50000 dilution

Predicted band size: 46, 44 kDa

Observed band size: 46, 44 kDa



Immunohistochemistry of paraffin-embedded human brain tissue using CSB-PA11239A0Rb at dilution of 1:100



Immunofluorescent analysis of U251 cells using CSB-PA11239A0Rb at dilution of 1:100 and Alexa Fluor 488-conjugated AffiniPure Goat Anti-Rabbit IgG(H+L)

Usage

For Research Use Only. Not for use in diagnostic or therapeutic procedures.