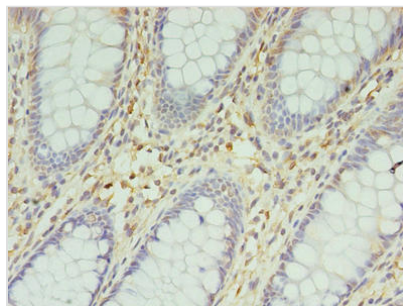




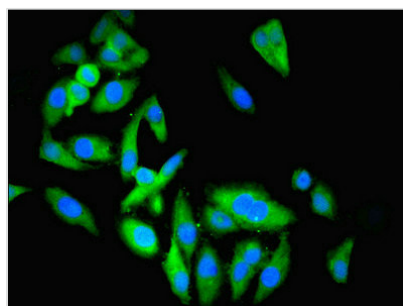
ENO3 Antibody

Product Code	CSB-PA13169A0Rb
Storage	Upon receipt, store at -20°C or -80°C. Avoid repeated freeze.
Uniprot No.	P13929
Immunogen	Recombinant Human Beta-enolase protein (7-432AA)
Raised In	Rabbit
Species Reactivity	Human
Tested Applications	ELISA, IHC, IF; Recommended dilution: IHC:1:20-1:200, IF:1:50-1:200
Form	Liquid
Conjugate	Non-conjugated
Storage Buffer	Preservative: 0.03% Proclin 300 Constituents: 50% Glycerol, 0.01M PBS, PH 7.4
Purification Method	>95%, Protein G purified
Isotype	IgG
Clonality	Polyclonal
Alias	Beta-enolase (EC 4.2.1.11) (2-phospho-D-glycerate hydro-lyase) (Enolase 3) (Muscle-specific enolase) (MSE) (Skeletal muscle enolase), ENO3
Immunogen Species	Homo sapiens (Human)
Research Area	Signal Transduction
Target Names	ENO3

Image



Immunohistochemistry of paraffin-embedded human colon cancer using CSB-CSB-PA13169A0Rb at dilution of 1:100



Immunofluorescent analysis of HeLa cells using CSB-PA13169A0Rb at dilution of 1:100 and Alexa Fluor 488-conjugated AffiniPure Goat Anti-Rabbit IgG(H+L)

**Usage**

For Research Use Only. Not for use in diagnostic or therapeutic procedures.