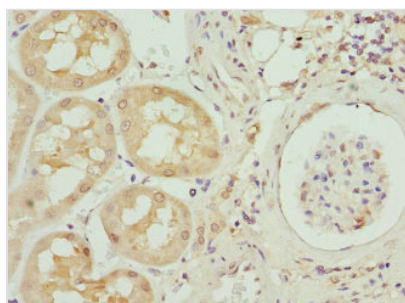




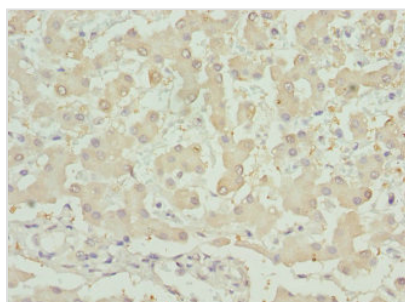
INHBB Antibody

Product Code	CSB-PA13929A0Rb
Storage	Upon receipt, store at -20°C or -80°C. Avoid repeated freeze.
Uniprot No.	P09529
Immunogen	Recombinant Human Inhibin beta B chain protein (295-405AA)
Raised In	Rabbit
Species Reactivity	Human
Tested Applications	ELISA, WB, IHC, IF; Recommended dilution: WB:1:500-1:2000, IHC:1:20-1:200, IF:1:50-1:200
Form	Liquid
Conjugate	Non-conjugated
Storage Buffer	Preservative: 0.03% Proclin 300 Constituents: 50% Glycerol, 0.01M PBS, PH 7.4
Purification Method	>95%, Protein G purified
Isotype	IgG
Clonality	Polyclonal
Alias	Inhibin beta B chain (Activin beta-B chain), INHBB
Immunogen Species	Homo sapiens (Human)
Research Area	Signal Transduction
Target Names	INHBB

Image



Immunohistochemistry of paraffin-embedded human kidney tissue using CSB-PA13929A0Rb at dilution of 1:100



Immunohistochemistry of paraffin-embedded human liver tissue using CSB-PA13929A0Rb at dilution of 1:100

**Western blot**All lanes: INHBB antibody at 2 μ g/ml

Lane 1: U87 whole cell lysate

Lane 2: A549 whole cell lysate

Lane 3: A431 whole cell lysate

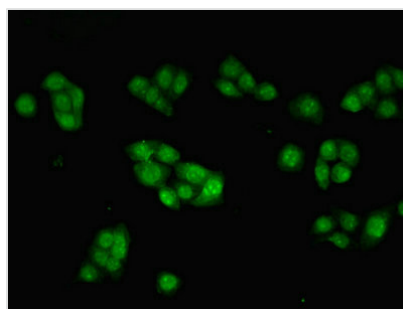
Lane 4: Hela whole cell lysate

Secondary

Goat polyclonal to rabbit IgG at 1/10000 dilution

Predicted band size: 46 kDa

Observed band size: 46 kDa



Immunofluorescent analysis of PC-3 cells using

CSB-PA13929A0Rb at dilution of 1:100 and

Alexa Fluor 488-conjugated AffiniPure Goat

Anti-Rabbit IgG(H+L)

Usage

For Research Use Only. Not for use in diagnostic or therapeutic procedures.