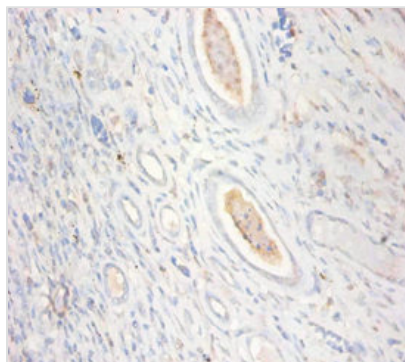




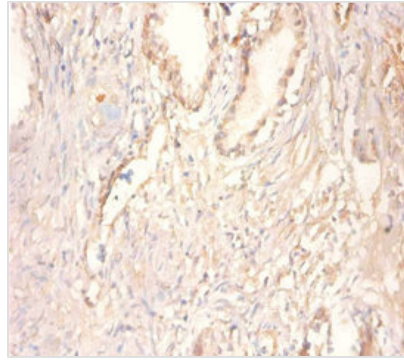
CKMT1A Antibody

| | |
|----------------------------|---|
| Product Code | CSB-PA09817A0Rb |
| Storage | Upon receipt, store at -20°C or -80°C. Avoid repeated freeze. |
| Uniprot No. | P12532 |
| Immunogen | Recombinant Human Creatine kinase U-type, mitochondrial protein (40-417AA) |
| Raised In | Rabbit |
| Species Reactivity | Human |
| Tested Applications | ELISA, IHC, IF; Recommended dilution: IHC:1:20-1:200, IF:1:50-1:200 |
| Form | Liquid |
| Conjugate | Non-conjugated |
| Storage Buffer | Preservative: 0.03% Proclin 300 Constituents: 50% Glycerol, 0.01M PBS, PH 7.4 |
| Purification Method | >95%, Protein G purified |
| Isotype | IgG |
| Clonality | Polyclonal |
| Alias | Creatine kinase U-type, mitochondrial (EC 2.7.3.2) (Acidic-type mitochondrial creatine kinase) (Mia-CK) (Ubiquitous mitochondrial creatine kinase) (U-MtCK), CKMT1A; CKMT1B, CKMT; CKMT |
| Immunogen Species | Homo sapiens (Human) |
| Research Area | Cell Biology |
| Target Names | CKMT1A |

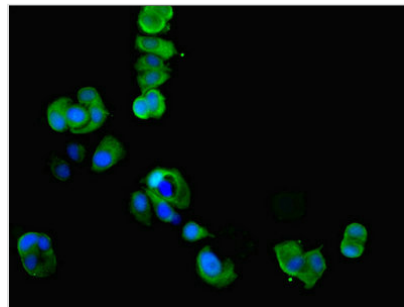
Image



Immunohistochemistry of paraffin-embedded human kidney tissue using CSB-PA09817A0Rb at dilution of 1:100



Immunohistochemistry of paraffin-embedded human prostate tissue using CSB-PA09817A0Rb at dilution of 1:100



Immunofluorescent analysis of MCF-7 cells using CSB-PA09817A0Rb at dilution of 1:100 and Alexa Fluor 488-conjugated AffiniPure Goat Anti-Rabbit IgG(H+L)

Usage

For Research Use Only. Not for use in diagnostic or therapeutic procedures.