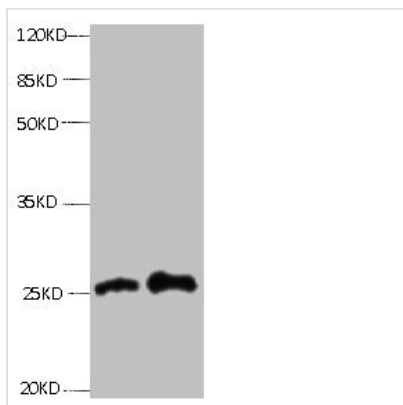


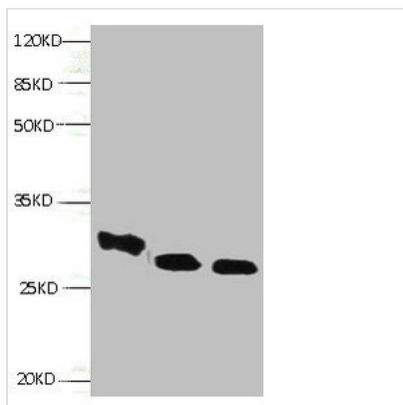


# RBP4 Monoclonal Antibody

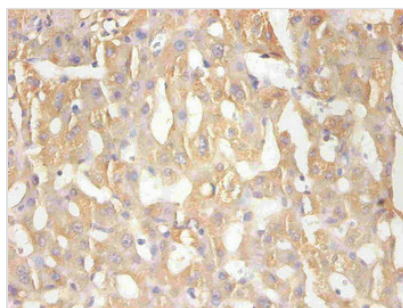
<b>Product Code</b>	CSB-MA070501A0m
<b>Storage</b>	Upon receipt, store at -20°C or -80°C. Avoid repeated freeze.
<b>Immunogen</b>	Recombinant Human Retinol-binding protein 4 protein
<b>Raised In</b>	mouse
<b>Species Reactivity</b>	Human,Mouse
<b>Specificity</b>	specific for native and denatured forms
<b>Tested Applications</b>	ELISA,WB,IHC;Recommended dilution:WB:1:500-1:5000,IHC:1:50-1:500
<b>Relevance</b>	<p>Retinol (Vitamin A) is transported in the blood bound to its carrier protein, retinol-binding protein (RBP), also designated plasma retinol-binding protein (PRBP) or RBP4. A member of the lipocalin family, RBP conveys retinol from stores in the liver to peripheral tissues. In plasma, RBP binds transthyretin (TTR, formerly called prealbumin) to prevent glomerular filtration of low molecular weight RBP in the kidneys. The stability of this complex holds diagnostic importance because the molar ratio of RBP:TTR provides an indirect way to indicate marginal vitamin A deficiency. Vitamin A deficiency blocks the secretion of RBP resulting in defective delivery and supply to epidermal cells. Originally identified solely as a transporter protein, recent studies correlating increased levels of RBP expression in adipose tissue with insulin resistance have generated research into the possible roles the protein may play in the pathogenesis of type 2 diabetes and obesity.</p>
<b>Form</b>	liquid
<b>Conjugate</b>	Non-conjugated
<b>Storage Buffer</b>	Preservative: 0.03% Proclin 300Constituents: 50% Glycerol, 0.01M PBS, PH 7.4
<b>Purification Method</b>	>95%,Protein G purified
<b>Isotype</b>	IgG1
<b>Clonality</b>	monoclonal
<b>Alias</b>	Plasma retinol-binding protein, PRBP, RBP, RBP4, PRO2222
<b>Product Type</b>	Monoclonal Antibody
<b>Immunogen Species</b>	Homo sapiens (Human)
<b>Clone No.</b>	6A1C2
<b>Image</b>	



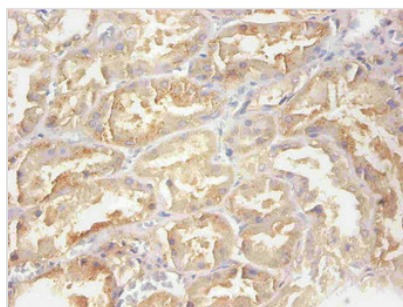
All lanes: Mouse anti- human Retinol-binding protein 4 monoclonal antibody at 0.3μg/ml  
 Lane 1: Human positive serum1:10  
 Lane 2: Human positive serum1:100  
 Secondary:HRP labeled Goat polyclonal to Mouse IgG at 1/3000 dilution  
 Predicted band size : 23kd  
 Observed band size : 27kd



All lanes: Mouse anti- human Retinol-binding protein 4 monoclonal antibody at 0.3μg/ml  
 Lane 1:RBP4 transfected E.coli lysate  
 Lane 2:Human positive serum1:100  
 Lane 3:mouse liver tissue  
 Secondary:HRP labeled Goat polyclonal to Mouse IgG at 1/3000 dilution  
 Predicted band size : 23kd  
 Observed band size : 27kd



Immunohistochemical of paraffin-embedded human hepatic tissue using CSB-MA070501A0m at dilution of 1:200



Immunohistochemical of paraffin-embedded human nephridial tissue using CSB-MA070501A0m at dilution of 1:200

**Usage**

For Research Use Only. Not for use in diagnostic or therapeutic procedures.