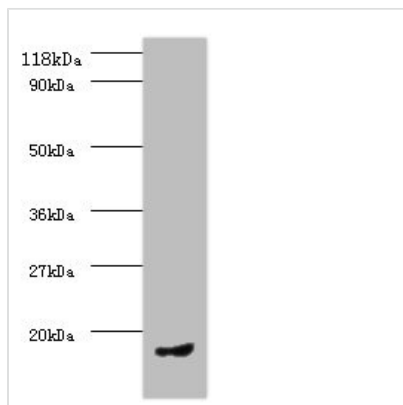




# CCL5 Antibody

<b>Product Code</b>	CSB-PA05959A0Rb
<b>Storage</b>	Upon receipt, store at -20°C or -80°C. Avoid repeated freeze.
<b>Uniprot No.</b>	P13501
<b>Immunogen</b>	Recombinant Human C-C motif chemokine 5 protein (24-91AA)
<b>Raised In</b>	Rabbit
<b>Species Reactivity</b>	Human
<b>Tested Applications</b>	ELISA, WB; Recommended dilution: WB:1:1000-1:5000
<b>Form</b>	Liquid
<b>Conjugate</b>	Non-conjugated
<b>Storage Buffer</b>	Preservative: 0.03% Proclin 300 Constituents: 50% Glycerol, 0.01M PBS, PH 7.4
<b>Purification Method</b>	>95%, Protein G purified
<b>Isotype</b>	IgG
<b>Clonality</b>	Polyclonal
<b>Alias</b>	C-C motif chemokine 5 (EoCP) (Eosinophil chemotactic cytokine) (SIS-delta) (Small-inducible cytokine A5) (T cell-specific protein P228) (TCP228) (T-cell-specific protein RANTES) [Cleaved into: RANTES(3-68); RANTES(4-68)], CCL5, D17S136E SCYA5
<b>Immunogen Species</b>	Homo sapiens (Human)
<b>Research Area</b>	Immunology
<b>Target Names</b>	CCL5

## Image



### Western blot

All lanes: CCL5 antibody at 2µg/ml + PMBC whole cell lysate

### Secondary

Goat polyclonal to rabbit IgG at 1/10000 dilution

Predicted band size: 10 kDa

Observed band size: 10 kDa

## Usage

For Research Use Only. Not for use in diagnostic or therapeutic procedures.