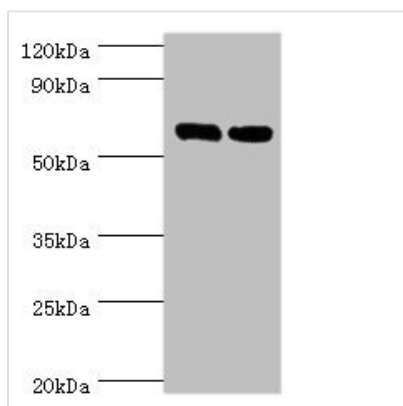




TROVE2 Antibody

Product Code	CSB-PA13749A0Rb
Storage	Upon receipt, store at -20°C or -80°C. Avoid repeated freeze.
Uniprot No.	P10155
Immunogen	Recombinant Human 60 kDa SS-A/Ro ribonucleoprotein protein (3-535AA)
Raised In	Rabbit
Species Reactivity	Human, Mouse, Rat
Tested Applications	ELISA, WB, IHC, IF; Recommended dilution: WB:1:500-1:5000, IHC:1:20-1:200, IF:1:50-1:200
Form	Liquid
Conjugate	Non-conjugated
Storage Buffer	Preservative: 0.03% Proclin 300 Constituents: 50% Glycerol, 0.01M PBS, PH 7.4
Purification Method	>95%, Protein G purified
Isotype	IgG
Clonality	Polyclonal
Alias	60 kDa SS-A/Ro ribonucleoprotein (60 kDa Ro protein) (60 kDa ribonucleoprotein Ro) (RoRNP) (Ro 60 kDa autoantigen) (Sjogren syndrome antigen A2) (Sjogren syndrome type A antigen) (SS-A) (TROVE domain family member 2), TROVE2, RO60 SSA2
Immunogen Species	Homo sapiens (Human)
Research Area	Immunology
Target Names	TROVE2

Image



Western blot

All lanes: TROVE2 antibody at 2µg/ml

Lane 1: Hela whole cell lysate

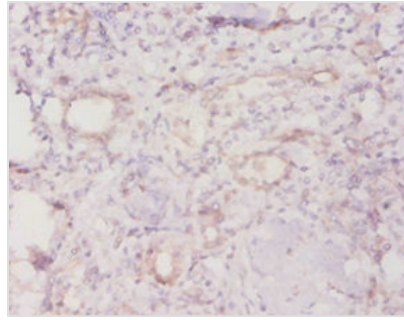
Lane 2: 293T whole cell lysate

Secondary

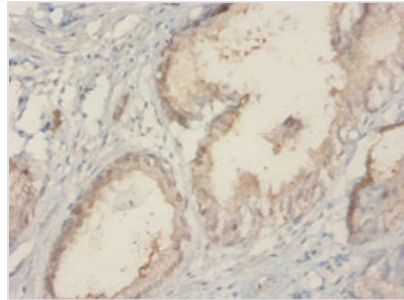
Goat polyclonal to rabbit IgG at 1/10000 dilution

Predicted band size: 61, 24, 59, 60 kDa

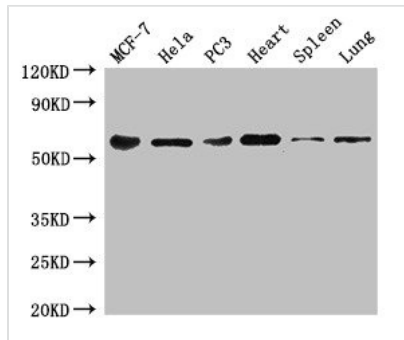
Observed band size: 61 kDa



Immunohistochemistry of paraffin-embedded human kidney tissue using CSB-PA13749A0Rb at dilution of 1:20



Immunohistochemistry of paraffin-embedded human prostate tissue using CSB-PA13749A0Rb at dilution of 1:20



Western Blot

Positive WB detected in: MCF-7 whole cell lysate, HeLa whole cell lysate, PC-3 whole cell lysate, Mouse heart tissue, Mouse spleen tissue, Mouse lung tissue

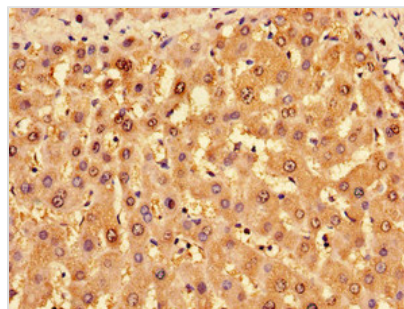
All lanes: TROVE2 antibody at 3µg/ml

Secondary

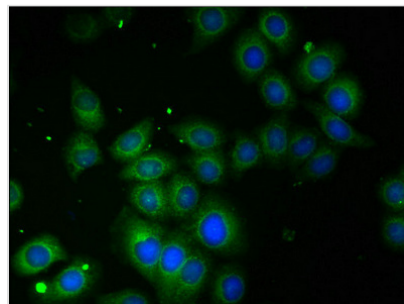
Goat polyclonal to rabbit IgG at 1/50000 dilution

Predicted band size: 61, 24, 59, 60 kDa

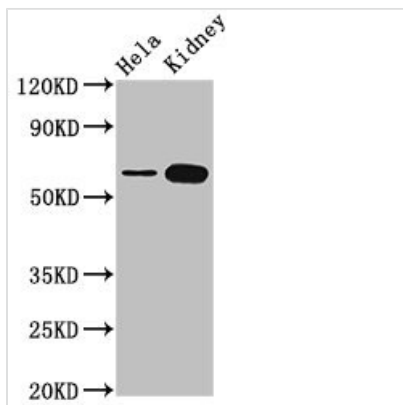
Observed band size: 61 kDa



Immunohistochemistry of paraffin-embedded human liver tissue using CSB-PA13749A0Rb at dilution of 1:100



Immunofluorescent analysis of A549 cells using CSB-PA13749A0Rb at dilution of 1:100



Western Blot

Positive WB detected in: HeLa whole cell lysate, Rat kidney tissue

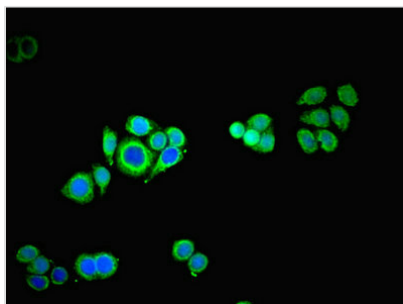
All lanes: TROVE2 antibody at 3.4µg/ml

Secondary

Goat polyclonal to rabbit IgG at 1/50000 dilution

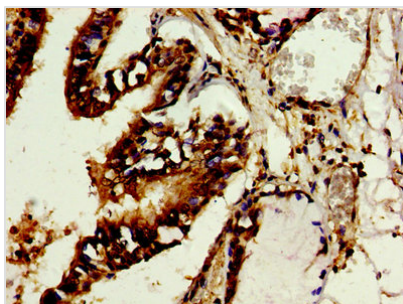
Predicted band size: 61, 24, 59, 60 kDa

Observed band size: 61 kDa



Immunofluorescent analysis of PC-3 cells

using CSB-PA13749A0Rb at dilution of 1:100 and Alexa Fluor 488-conjugated AffiniPure Goat Anti-Rabbit IgG(H+L)



Immunohistochemistry of paraffin-embedded human lung tissue using CSB-PA13749A0Rb at dilution of 1:100

Usage

For Research Use Only. Not for use in diagnostic or therapeutic procedures.