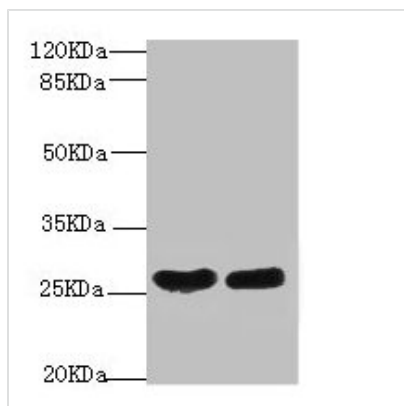




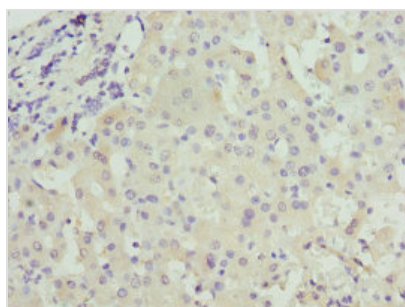
CRP Antibody

Product Code	CSB-PA06079A0Rb
Storage	Upon receipt, store at -20°C or -80°C. Avoid repeated freeze.
Uniprot No.	P02741
Immunogen	Recombinant Human C-reactive protein (19-224AA)
Raised In	Rabbit
Species Reactivity	Human
Tested Applications	ELISA, WB, IHC; Recommended dilution: WB:1:1000-1:5000, IHC:1:20-1:200
Form	Liquid
Conjugate	Non-conjugated
Storage Buffer	Preservative: 0.03% Proclin 300 Constituents: 50% Glycerol, 0.01M PBS, PH 7.4
Purification Method	>95%, Protein G purified
Isotype	IgG
Clonality	Polyclonal
Alias	C-reactive protein [Cleaved into: C-reactive protein(1-205)], CRP, PTX1
Immunogen Species	Homo sapiens (Human)
Research Area	Immunology
Target Names	CRP

Image



Western blot
 All lanes: CRP antibody at 2µg/ml
 Lane 1: High values of serum at 1: 5
 Lane 2: High values of serum at 1: 10
 Secondary
 Goat polyclonal to rabbit IgG at 1/10000 dilution
 Predicted band size: 26, 11 kDa
 Observed band size: 26 kDa



Immunohistochemistry of paraffin-embedded human liver cancer using CSB-PA06079A0Rb at dilution of 1:100



Usage

For Research Use Only. Not for use in diagnostic or therapeutic procedures.