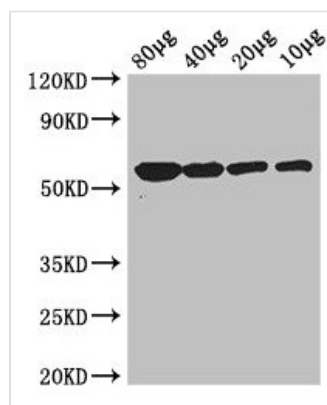




glpK Antibody

| | |
|----------------------------|--|
| Product Code | CSB-PA18407A0Rb |
| Storage | Upon receipt, store at -20°C or -80°C. Avoid repeated freeze. |
| Uniprot No. | P0A6F3 |
| Immunogen | Recombinant Escherichia coli Glycerol kinase protein (2-502AA) |
| Raised In | Rabbit |
| Species Reactivity | Escherichia coli |
| Tested Applications | ELISA, WB; Recommended dilution: WB:1:500-1:5000 |
| Form | Liquid |
| Conjugate | Non-conjugated |
| Storage Buffer | Preservative: 0.03% Proclin 300 Constituents: 50% Glycerol, 0.01M PBS, PH 7.4 |
| Purification Method | >95%, Protein G purified |
| Isotype | IgG |
| Clonality | Polyclonal |
| Alias | Glycerol kinase (EC 2.7.1.30) (ATP:glycerol 3-phosphotransferase) (Glycerokinase) (GK), glpK |
| Immunogen Species | Escherichia coli |
| Research Area | Signal Transduction |
| Target Names | glpK |

Image



Western Blot

Positive WB detected in: Rosseta bacteria lysate at 80µg, 40µg, 20µg, 10µg

All lanes: glpK antibody at 3µg/ml

Secondary

Goat polyclonal to rabbit IgG at 1/50000 dilution

Predicted band size: 57 kDa

Observed band size: 57 kDa