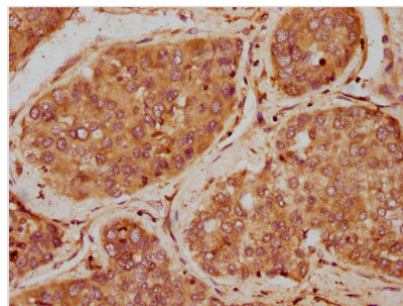




IGF1 Antibody

Product Code	CSB-PA08399A0Rb
Storage	Upon receipt, store at -20°C or -80°C. Avoid repeated freeze.
Uniprot No.	P05019
Immunogen	Recombinant Human Insulin-like growth factor I protein (49-118AA)
Raised In	Rabbit
Species Reactivity	Human
Tested Applications	ELISA, IHC; Recommended dilution: IHC:1:200-1:500
Form	Liquid
Conjugate	Non-conjugated
Storage Buffer	Preservative: 0.03% Proclin 300 Constituents: 50% Glycerol, 0.01M PBS, PH 7.4
Purification Method	>95%, Protein G purified
Isotype	IgG
Clonality	Polyclonal
Alias	Insulin-like growth factor I (IGF-I) (Mechano growth factor) (MGF) (Somatomedin-C), IGF1, IBP1
Immunogen Species	Homo sapiens (Human)
Research Area	Signal Transduction
Target Names	IGF1

Image



IHC image of CSB-PA08399A0Rb diluted at 1:400 and staining in paraffin-embedded human liver cancer performed on a Leica Bond™ system. After dewaxing and hydration, antigen retrieval was mediated by high pressure in a citrate buffer (pH 6.0). Section was blocked with 10% normal goat serum 30min at RT. Then primary antibody (1% BSA) was incubated at 4°C overnight. The primary is detected by a biotinylated secondary antibody and visualized using an HRP conjugated SP system.