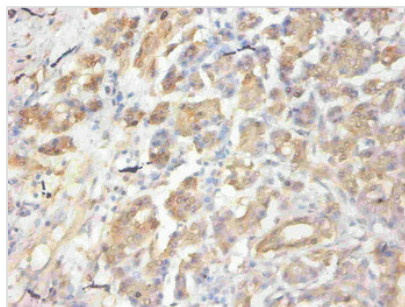




CCL2 Monoclonal Antibody

Product Code	CSB-MA058641A0m
Storage	Upon receipt, store at -20°C or -80°C. Avoid repeated freeze.
Immunogen	Recombinant Human C-C motif chemokine 2
Raised In	mouse
Species Reactivity	Human
Specificity	specific for human C-C motif chemokine 2 denatured and native forms
Tested Applications	ELISA,IHC;Recommended dilution:IHC:1:50-1:500
Relevance	<p>Chemotactic factor that attracts monocytes and basophils but not neutrophils or eosinophils. Augments monocyte anti-tumor activity. Has been implicated in the pathogenesis of diseases characterized by monocytic infiltrates, like psoriasis, rheumatoid arthritis or atherosclerosis. May be involved in the recruitment of monocytes into the arterial wall during the disease process of atherosclerosis.</p> <p>[1] "Cloning and sequencing of the cDNA for human monocyte chemotactic and activating factor (MCAF)."Furutani Y., Nomura H., Notake M., Oyamada Y., Fukui T., Yamada M., Larsen C.G., Oppenheim J.J., Matsushima K.Biochem. Biophys. Res. Commun. 159:249-255(1989) [2] "The human homolog of the JE gene encodes a monocyte secretory protein."Rollins B.J., Stier P., Ernst T., Wong G.G.Mol. Cell. Biol. 9:4687-4695(1989) [3] "Human monocyte chemoattractant protein-1 (MCP-1). Full-length cDNA cloning, expression in mitogen-stimulated blood mononuclear leukocytes, and sequence similarity to mouse competence gene JE."Yoshimura T., Yuhki N., Moore S.K., Appella E., Lerman M.I., Leonard E.J.FEBS Lett. 244:487-493(1989)</p>
Form	liquid
Conjugate	Non-conjugated
Storage Buffer	Preservative: 0.03% Proclin 300Constituents: 50% Glycerol, 0.01M PBS, PH 7.4
Purification Method	>95%,Protein G purified
Isotype	IgG2b
Clonality	monoclonal
Alias	Monocyte chemoattractant protein 1,Monocyte chemotactic and activating factor,Monocyte chemotactic protein 1,Monocyte secretory protein JE,Small-inducible cytokine A2,CCL2,MCP1, SCYA2
Product Type	Monoclonal Antibody
Immunogen Species	Homo sapiens (Human)
Clone No.	3D2E5
Image	



Immunohistochemical of paraffin-embedded human pancreas using CSB-MA058641A0m at dilution of 1:50

Usage

For Research Use Only. Not for use in diagnostic or therapeutic procedures.