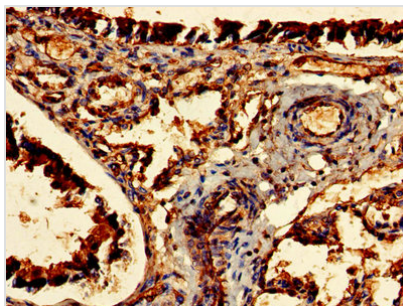




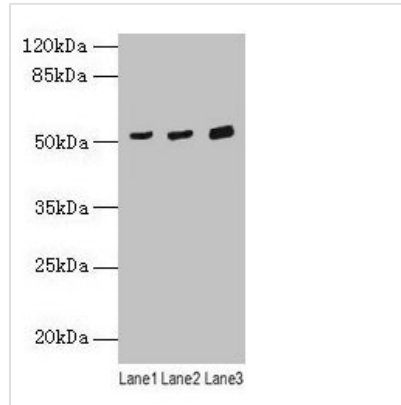
# CDR2 Antibody

<b>Product Code</b>	CSB-PA005103LA01HU
<b>Storage</b>	Upon receipt, store at -20°C or -80°C. Avoid repeated freeze.
<b>Uniprot No.</b>	Q01850
<b>Immunogen</b>	Recombinant Human Cerebellar degeneration-related protein 2 protein (1-454AA)
<b>Raised In</b>	Rabbit
<b>Species Reactivity</b>	Human, Mouse
<b>Tested Applications</b>	ELISA, WB, IHC; Recommended dilution: WB:1:1000-1:5000, IHC:1:20-1:200
<b>Form</b>	Liquid
<b>Conjugate</b>	Non-conjugated
<b>Storage Buffer</b>	Preservative: 0.03% Proclin 300 Constituents: 50% Glycerol, 0.01M PBS, PH 7.4
<b>Purification Method</b>	>95%, Protein G purified
<b>Isotype</b>	IgG
<b>Clonality</b>	Polyclonal
<b>Alias</b>	Cerebellar degeneration-related protein 2 (Major Yo paraneoplastic antigen) (Paraneoplastic cerebellar degeneration-associated antigen), CDR2, PCD17
<b>Immunogen Species</b>	Homo sapiens (Human)
<b>Research Area</b>	Immunology
<b>Target Names</b>	CDR2

## Image



Immunohistochemistry of paraffin-embedded human lung tissue using CSB-PA005103LA01HU at dilution of 1:100

**Western blot**All lanes: CDR2 antibody at 4 $\mu$ g/ml

Lane 1: Mouse lung tissue

Lane 2: Hela whole cell lysate

Lane 3: HepG2 whole cell lysate

Secondary

Goat polyclonal to rabbit IgG at 1/10000 dilution

Predicted band size: 52 kDa

Observed band size: 52 kDa

**Usage**

For Research Use Only. Not for use in diagnostic or therapeutic procedures.