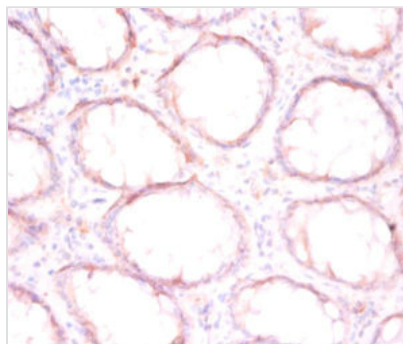




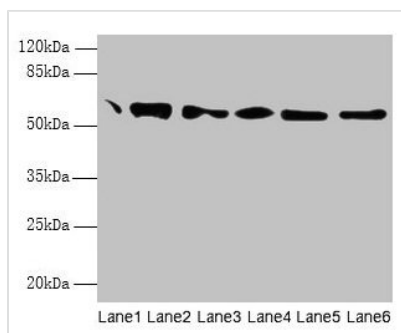
# P4HB Antibody

<b>Product Code</b>	CSB-PA00254A0Rb
<b>Storage</b>	Upon receipt, store at -20°C or -80°C. Avoid repeated freeze.
<b>Uniprot No.</b>	P07237
<b>Immunogen</b>	Recombinant Human Protein disulfide-isomerase protein (29-508AA)
<b>Raised In</b>	Rabbit
<b>Species Reactivity</b>	Human, Mouse
<b>Tested Applications</b>	ELISA, WB, IHC; Recommended dilution: WB:1:500-1:5000, IHC:1:20-1:200
<b>Form</b>	Liquid
<b>Conjugate</b>	Non-conjugated
<b>Storage Buffer</b>	Preservative: 0.03% Proclin 300 Constituents: 50% Glycerol, 0.01M PBS, PH 7.4
<b>Purification Method</b>	>95%, Protein G purified
<b>Isotype</b>	IgG
<b>Clonality</b>	Polyclonal
<b>Alias</b>	Protein disulfide-isomerase (PDI) (EC 5.3.4.1) (Cellular thyroid hormone-binding protein) (Prolyl 4-hydroxylase subunit beta) (p55), P4HB, ERBA2L PDI PDIA1 PO4DB
<b>Immunogen Species</b>	Homo sapiens (Human)
<b>Research Area</b>	Tags & Cell Markers
<b>Target Names</b>	P4HB

## Image



Immunohistochemistry of paraffin-embedded human colon cancer using CSB-PA00254A0Rb at dilution of 1:50



#### Western blot

All lanes: P4HB antibody at 1.8 $\mu$ g/ml

Lane 1: Mouse brain tissue

Lane 2: Colo320 whole cell lysate

Lane 3: HepG2 whole cell lysate

Lane 4: 293T whole cell lysate

Lane 5: Hela whole cell lysate

Lane 6: MCF-7 whole cell lysate

Secondary

Goat polyclonal to rabbit IgG at 1/10000 dilution

Predicted band size: 58 kDa

Observed band size: 58 kDa