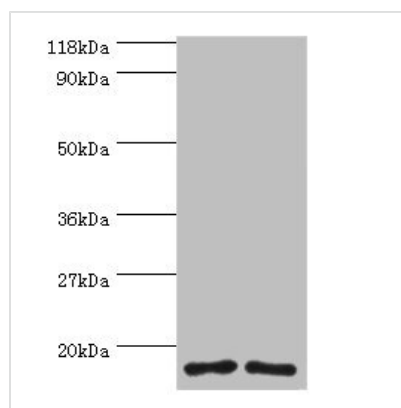




RPS16 Antibody

Product Code	CSB-PA02465A0Rb
Storage	Upon receipt, store at -20°C or -80°C. Avoid repeated freeze.
Uniprot No.	P62249
Immunogen	Recombinant Human 40S ribosomal protein S16 protein (2-142AA)
Raised In	Rabbit
Species Reactivity	Human
Tested Applications	ELISA, WB; Recommended dilution: WB:1:1000-1:5000
Form	Liquid
Conjugate	Non-conjugated
Storage Buffer	Preservative: 0.03% Proclin 300 Constituents: 50% Glycerol, 0.01M PBS, PH 7.4
Purification Method	>95%, Protein G purified
Isotype	IgG
Clonality	Polyclonal
Alias	40S ribosomal protein S16 (Small ribosomal subunit protein uS9), RPS16
Immunogen Species	Homo sapiens (Human)
Research Area	Epigenetics and Nuclear Signaling
Target Names	RPS16

Image



Western blot

All lanes: RPS16 protein antibody at 2µg/ml

Lane 1: 293T whole cell lysate

Lane 2: EC109 whole cell lysate

Secondary

Goat polyclonal to rabbit IgG at 1/15000 dilution

Predicted band size: 17 kDa

Observed band size: 17 kDa