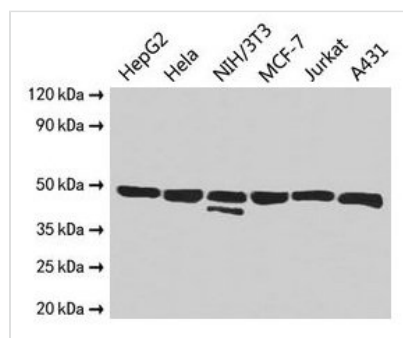




# ENO1 Antibody

<b>Product Code</b>	CSB-PA02395A0Rb
<b>Storage</b>	Upon receipt, store at -20°C or -80°C. Avoid repeated freeze.
<b>Uniprot No.</b>	P06733
<b>Immunogen</b>	Recombinant Human Alpha-enolase protein (2-428AA)
<b>Raised In</b>	Rabbit
<b>Species Reactivity</b>	Human, Mouse
<b>Tested Applications</b>	ELISA, WB, IHC, IF; Recommended dilution: WB:1:500-1:5000, IHC:1:20-1:200, IF:1:50-1:200
<b>Form</b>	Liquid
<b>Conjugate</b>	Non-conjugated
<b>Storage Buffer</b>	Preservative: 0.03% Proclin 300 Constituents: 50% Glycerol, 0.01M PBS, PH 7.4
<b>Purification Method</b>	>95%, Protein G purified
<b>Isotype</b>	IgG
<b>Clonality</b>	Polyclonal
<b>Alias</b>	Alpha-enolase (EC 4.2.1.11) (2-phospho-D-glycerate hydro-lyase) (C-myc promoter-binding protein) (Enolase 1) (MBP-1) (MPB-1) (Non-neural enolase) (NNE) (Phosphopyruvate hydratase) (Plasminogen-binding protein), ENO1, ENO1L1 MBPB1 MPB1
<b>Immunogen Species</b>	Homo sapiens (Human)
<b>Research Area</b>	Signal Transduction
<b>Target Names</b>	ENO1

## Image



### Western Blot

Positive WB detected in: HepG2 whole cell lysate, HeLa whole cell lysate, NIH/3T3 whole cell lysate, MCF-7 whole cell lysate, Jurkat whole cell lysate, A431 whole cell lysate

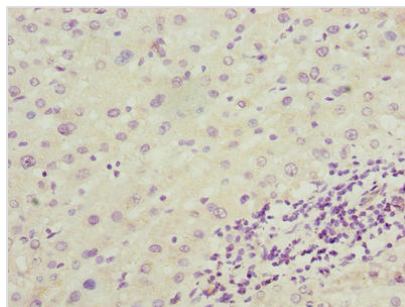
All lanes: ENO1 antibody at 2.5µg/ml

### Secondary

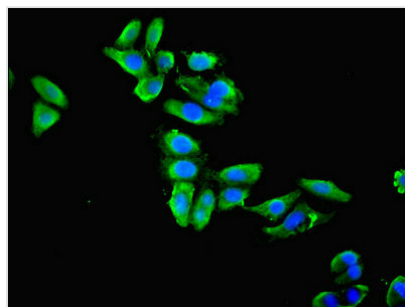
Goat polyclonal to rabbit IgG at 1/10000 dilution

Predicted band size: 48, 37 kDa

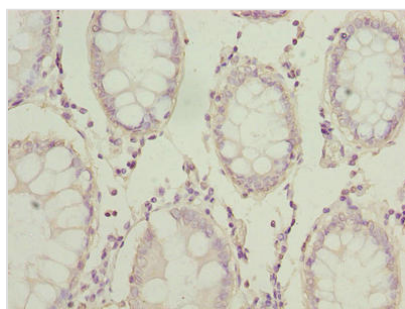
Observed band size: 48 kDa



Immunohistochemistry of paraffin-embedded human liver cancer using CSB-PA02395A0Rb at dilution of 1:100



Immunofluorescent analysis of HepG2 cells using CSB-PA02395A0Rb at dilution of 1:100 and Alexa Fluor 488-conjugated AffiniPure Goat Anti-Rabbit IgG(H+L)



Immunohistochemistry of paraffin-embedded human colon cancer using CSB-PA02395A0Rb at dilution of 1:100