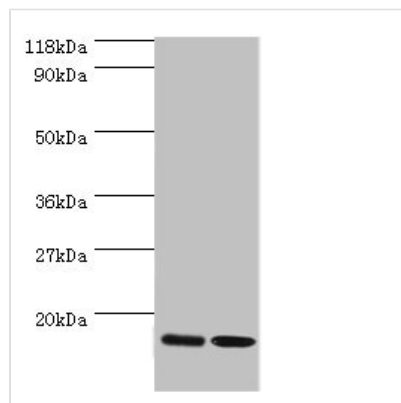




RPL27 Antibody

Product Code	CSB-PA02345A0Rb
Storage	Upon receipt, store at -20°C or -80°C. Avoid repeated freeze.
Uniprot No.	P61353
Immunogen	Recombinant Human 60S ribosomal protein L27 protein (2-136AA)
Raised In	Rabbit
Species Reactivity	Human
Tested Applications	ELISA, WB, IHC, IF; Recommended dilution: WB:1:500-1:2000, IHC:1:20-1:200, IF:1:50-1:200
Form	Liquid
Conjugate	Non-conjugated
Storage Buffer	Preservative: 0.03% Proclin 300 Constituents: 50% Glycerol, 0.01M PBS, PH 7.4
Purification Method	>95%, Protein G purified
Isotype	IgG
Clonality	Polyclonal
Alias	60S ribosomal protein L27 (Large ribosomal subunit protein eL27), RPL27
Immunogen Species	Homo sapiens (Human)
Research Area	Others
Target Names	RPL27

Image



Western blot

All lanes: RPL27 antibody at 2µg/ml

Lane 1: EC109 whole cell lysate

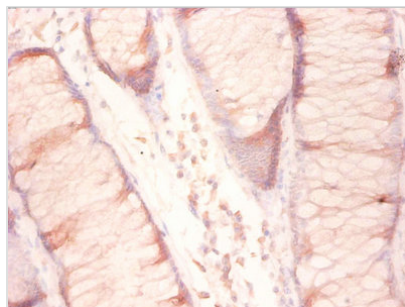
Lane 2: 293T whole cell lysate

Secondary

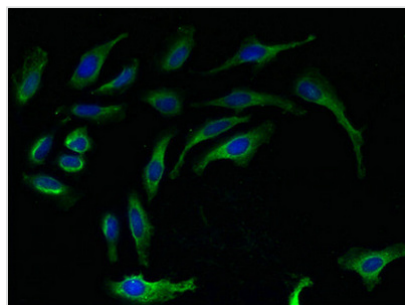
Goat polyclonal to rabbit IgG at 1/15000 dilution

Predicted band size: 16 kDa

Observed band size: 16 kDa



Immunohistochemistry of paraffin-embedded human colon cancer using CSB-PA02345A0Rb at dilution of 1:50



Immunofluorescent analysis of HeLa cells using CSB-PA02345A0Rb at dilution of 1:100 and Alexa Fluor 488-conjugated AffiniPure Goat Anti-Rabbit IgG(H+L)

Usage

For Research Use Only. Not for use in diagnostic or therapeutic procedures.