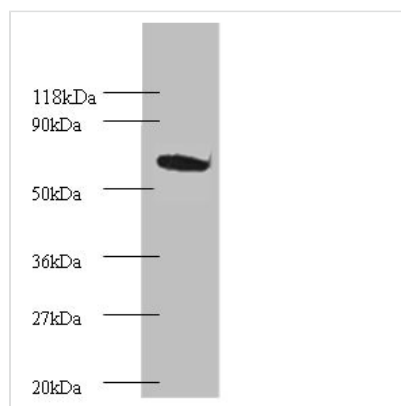




PSMB4 Antibody

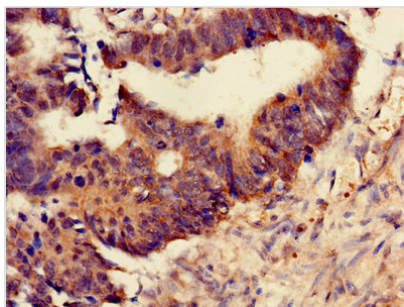
Product Code	CSB-PA01374A0Rb
Storage	Upon receipt, store at -20°C or -80°C. Avoid repeated freeze.
Uniprot No.	P28070
Immunogen	Recombinant Human Proteasome subunit beta type-4 protein (46-264AA)
Raised In	Rabbit
Species Reactivity	Human
Tested Applications	ELISA, WB, IHC, IF; Recommended dilution: WB:1:500-1:2000, IHC:1:20-1:200, IF:1:50-1:200
Form	Liquid
Conjugate	Non-conjugated
Storage Buffer	Preservative: 0.03% Proclin 300 Constituents: 50% Glycerol, 0.01M PBS, PH 7.4
Purification Method	>95%, Protein G purified
Isotype	IgG
Clonality	Polyclonal
Alias	Proteasome subunit beta type-4 (EC 3.4.25.1) (26 kDa prosomal protein) (HsBPROS26) (PROS-26) (Macropain beta chain) (Multicatalytic endopeptidase complex beta chain) (Proteasome beta chain) (Proteasome chain 3) (HsN3), PSMB4, PROS26
Immunogen Species	Homo sapiens (Human)
Research Area	Cell Biology
Target Names	PSMB4

Image

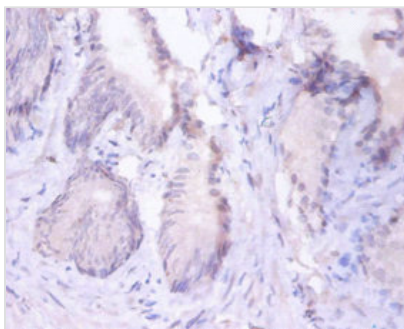


Western blot

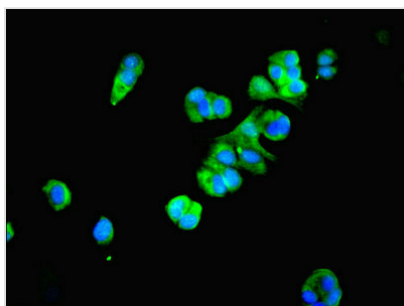
All lanes: Proteasome subunit beta type-4
Antibody at 2µg/ml + EC109 whole cell lysate
Secondary
Goat polyclonal to rabbit IgG at 1/15000 dilution
Predicted band size: 30 kDa
Observed band size: 75 kDa



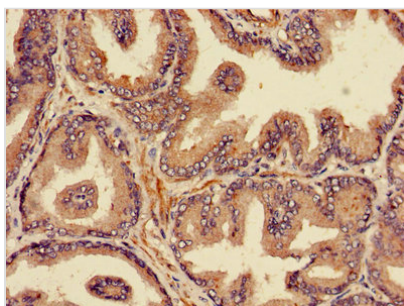
Immunohistochemistry of paraffin-embedded human colon cancer using CSB-PA01374A0Rb at dilution of 1:100



Immunohistochemistry of paraffin-embedded human prostate tissue using CSB-PA01374A0Rb at dilution of 1:100



Immunofluorescent analysis of MCF-7 cells using CSB-PA01374A0Rb at dilution of 1:100 and Alexa Fluor 488-conjugated AffiniPure Goat Anti-Rabbit IgG(H+L)



Immunohistochemistry of paraffin-embedded human prostate cancer using CSB-PA01374A0Rb at dilution of 1:100

Usage

For Research Use Only. Not for use in diagnostic or therapeutic procedures.