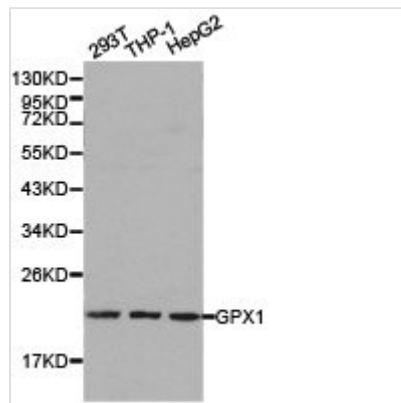




# GPX1 Antibody

<b>Product Code</b>	CSB-PA009866KA01HU
<b>Storage</b>	Upon receipt, store at -20°C or -80°C. Avoid repeated freeze.
<b>Uniprot No.</b>	P07203
<b>Immunogen</b>	Recombinant protein of Human GPX1
<b>Raised In</b>	Rabbit
<b>Species Reactivity</b>	Human,Mouse,Rat
<b>Tested Applications</b>	ELISA,WB,IHC;WB:1:500-1:2000,IHC:1:50-1:200
<b>Storage Buffer</b>	Store at -20°C or -80°C. Avoid freeze / thaw cycles. Buffer: PBS with 0.02% sodium azide, 50% glycerol, pH7.3.
<b>Purification Method</b>	Affinity purification
<b>Isotype</b>	IgG
<b>Alias</b>	GPX1; GSHPX1; MGC14399; MGC88245
<b>Product Type</b>	Rabbit Anti Human PolyClonal Antibody
<b>Immunogen Species</b>	Homo sapiens (Human)
<b>Research Area</b>	Cancer
<b>Intended Use</b>	For research use only. Not for human, diagnostic or therapeutic use.
<b>Target Names</b>	GPX1

## Image



Western blot analysis of extracts of various cell lines, using GPX1 antibody.

## Target Details

This gene encodes a member of the glutathione peroxidase family. Glutathione peroxidase functions in the detoxification of hydrogen peroxide, and is one of the most important antioxidant enzymes in humans. This protein is one of only a few proteins known in higher vertebrates to contain selenocysteine, which occurs at the active site of glutathione peroxidase and is coded by UGA, that normally functions as a translation termination codon. In addition, this protein is characterized in a polyalanine sequence polymorphism in the N-terminal region, which includes three alleles with five, six or seven alanine (ALA) repeats in this sequence. The allele with five ALA repeats is significantly associated with breast



cancer risk. Two alternatively spliced transcript variants encoding distinct isoforms have been found for this gene.