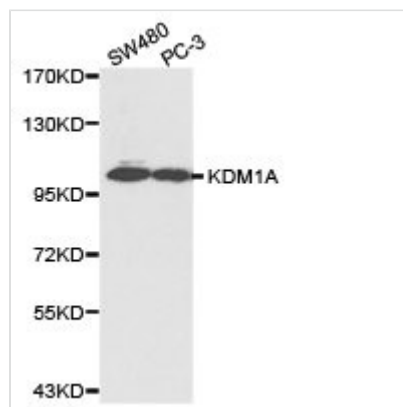




# KDM1A Antibody

<b>Product Code</b>	CSB-PA525314KA01HU
<b>Storage</b>	Upon receipt, store at -20°C or -80°C. Avoid repeated freeze.
<b>Uniprot No.</b>	O60341
<b>Immunogen</b>	Recombinant protein of Human KDM1A
<b>Raised In</b>	Rabbit
<b>Species Reactivity</b>	Human,Mouse,Rat
<b>Tested Applications</b>	ELISA,WB,IHC;WB:1:500-1:2000,IHC:1:50-1:200
<b>Storage Buffer</b>	Store at -20°C or -80°C. Avoid freeze / thaw cycles. Buffer: PBS with 0.02% sodium azide, 50% glycerol, pH7.3.
<b>Purification Method</b>	Affinity purification
<b>Isotype</b>	IgG
<b>Alias</b>	KDM1;AOF2;BHC110;KIAA0601;LSD1 ;KDM1A
<b>Product Type</b>	Rabbit Anti Human PolyClonal Antibody
<b>Immunogen Species</b>	Homo sapiens (Human)
<b>Intended Use</b>	For research use only. Not for human, diagnostic or therapeutic use.
<b>Target Names</b>	KDM1A

## Image



Western blot analysis of SW480 cell and PC-3 cell lysate using KDM1A antibody.

## Usage

For Research Use Only. Not for use in diagnostic or therapeutic procedures.