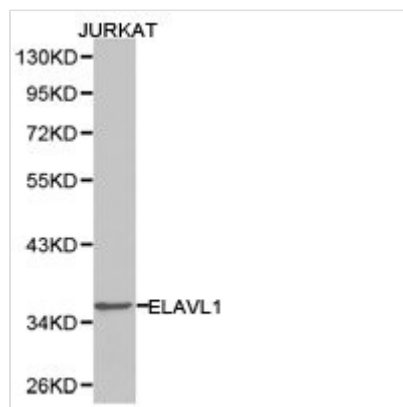




ELAVL1 Antibody

Product Code	CSB-PA007592KA01HU
Storage	Upon receipt, store at -20°C or -80°C. Avoid repeated freeze.
Uniprot No.	Q15717
Immunogen	Recombinant protein of Human ELAVL1
Raised In	Rabbit
Species Reactivity	Human,Mouse,Rat
Tested Applications	ELISA,WB,IHC;WB:1:500-1:2000,IHC:1:50-1:200
Storage Buffer	Store at -20°C or -80°C. Avoid freeze / thaw cycles. Buffer: PBS with 0.02% sodium azide, 50% glycerol, pH7.3.
Purification Method	Affinity purification
Isotype	IgG
Alias	ELAVL1; HUR; Hua; MeIG; ELAV1
Product Type	Rabbit Anti Human PolyClonal Antibody
Immunogen Species	Homo sapiens (Human)
Intended Use	For research use only. Not for human, diagnostic or therapeutic use.
Target Names	ELAVL1

Image



Western blot analysis of extracts of Jurkat cell lines, using ELAVL1 antibody.

Target Details

This protein is a member of the ELAVL protein family. This encoded protein contains 3 RNA-binding domains and binds cis-acting AU-rich elements. It destabilizes mRNAs and thereby regulates gene expression.