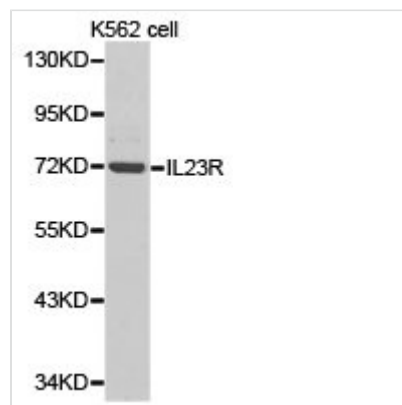




# IL23R Antibody

<b>Product Code</b>	CSB-PA011639KA01HU
<b>Storage</b>	Upon receipt, store at -20°C or -80°C. Avoid repeated freeze.
<b>Uniprot No.</b>	Q5VWK5
<b>Immunogen</b>	Recombinant protein of Human IL23R
<b>Raised In</b>	Rabbit
<b>Species Reactivity</b>	Human,Mouse,Rat
<b>Tested Applications</b>	ELISA,WB,IHC;WB:1:500-1:2000,IHC:1:50-1:200
<b>Storage Buffer</b>	Store at -20°C or -80°C. Avoid freeze / thaw cycles. Buffer: PBS with 0.02% sodium azide, 50% glycerol, pH7.3.
<b>Purification Method</b>	>95%,Protein G purified
<b>Isotype</b>	IgG
<b>Alias</b>	IL23R
<b>Product Type</b>	Rabbit Anti Human PolyClonal Antibody
<b>Immunogen Species</b>	Homo sapiens (Human)
<b>Intended Use</b>	For research use only. Not for human, diagnostic or therapeutic use.
<b>Target Names</b>	IL23R

## Image



Western blot analysis of extracts of K562 cell lines, using IL23R antibody.

<b>Target Details</b>	This protein is a subunit of the receptor for IL23A/IL23. This protein pairs with the receptor molecule IL12RB1/IL12Rbeta1, and both are required for IL23A signaling. This protein associates constitutively with Janus kinase 2 (JAK2), and also binds to transcription activator STAT3 in a ligand-dependent manner.
<b>Usage</b>	For Research Use Only. Not for use in diagnostic or therapeutic procedures.