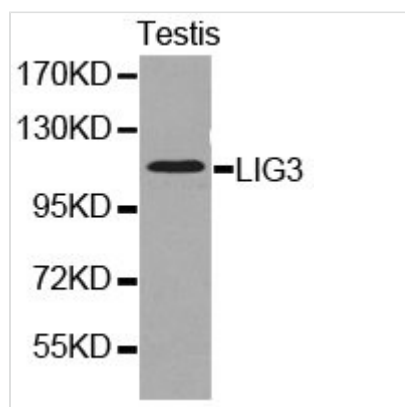




# LIG3 Antibody

<b>Product Code</b>	CSB-PA012931KA01HU
<b>Storage</b>	Upon receipt, store at -20°C or -80°C. Avoid repeated freeze.
<b>Uniprot No.</b>	P49916
<b>Immunogen</b>	Recombinant protein of Human LIG3
<b>Raised In</b>	Rabbit
<b>Species Reactivity</b>	Human,Mouse,Rat
<b>Tested Applications</b>	ELISA,WB,IHC;WB:1:500-1:2000,IHC:1:50-1:200
<b>Storage Buffer</b>	Store at -20°C or -80°C. Avoid freeze / thaw cycles. Buffer: PBS with 0.02% sodium azide, 50% glycerol, pH7.3.
<b>Purification Method</b>	Affinity purification
<b>Isotype</b>	IgG
<b>Alias</b>	LIG2; LIG3
<b>Product Type</b>	Rabbit Anti Human PolyClonal Antibody
<b>Immunogen Species</b>	Homo sapiens (Human)
<b>Intended Use</b>	For research use only. Not for human, diagnostic or therapeutic use.
<b>Target Names</b>	LIG3

## Image



Western blot analysis of extracts of testis cell lines, using LIG3 antibody.

## Target Details

This gene is a member of the DNA ligase family. Each member of this family encodes a protein that catalyzes the joining of DNA ends but they each have a distinct role in DNA metabolism. This protein is involved in excision repair and is located in both the mitochondria and nucleus, with translation initiation from the upstream start codon allowing for transport to the mitochondria and translation initiation from a downstream start codon allowing for transport to the nucleus. Additionally, alternate transcriptional splice variants, encoding different isoforms, have been characterized.