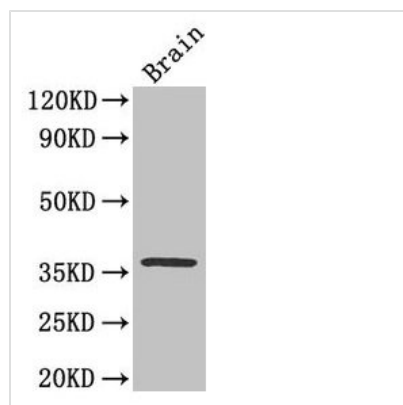




CREB1 Antibody

Product Code	CSB-PA005947HA01HU
Storage	Upon receipt, store at -20°C or -80°C. Avoid repeated freeze.
Uniprot No.	P16220
Immunogen	Recombinant Human Cyclic AMP-responsive element-binding protein 1 protein (1-341AA)
Raised In	Rabbit
Species Reactivity	Human, Mouse
Tested Applications	ELISA, WB, IHC; Recommended dilution: WB:1:1000-1:5000, IHC:1:20-1:200
Form	Liquid
Conjugate	Non-conjugated
Storage Buffer	Preservative: 0.03% Proclin 300 Constituents: 50% Glycerol, 0.01M PBS, PH 7.4
Purification Method	>95%, Protein G purified
Isotype	IgG
Clonality	Polyclonal
Alias	Cyclic AMP-responsive element-binding protein 1 (CREB-1) (cAMP-responsive element-binding protein 1), CREB1
Immunogen Species	Homo sapiens (Human)
Research Area	Epigenetics and Nuclear Signaling
Target Names	CREB1

Image



Western Blot

Positive WB detected in: Mouse brain tissue

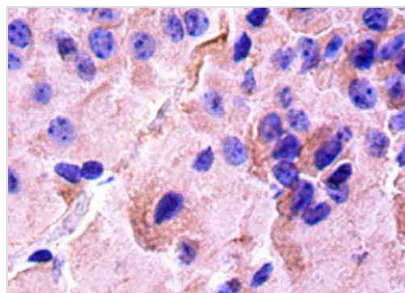
All lanes: CREB1 antibody at 3.3µg/ml

Secondary

Goat polyclonal to rabbit IgG at 1/50000 dilution

Predicted band size: 37, 36, 26 kDa

Observed band size: 37 kDa



Immunohistochemistry of paraffin-embedded mouse brain tissue using CSB-PA005947HA01HU at dilution of 1:50

Usage

For Research Use Only. Not for use in diagnostic or therapeutic procedures.