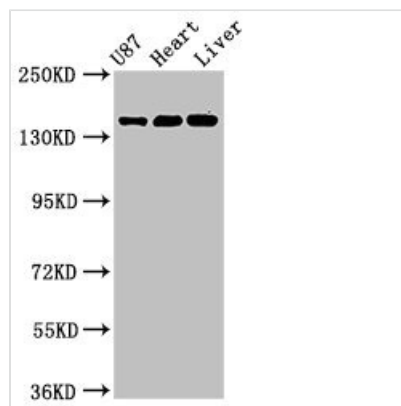




GRIN2A Antibody

Product Code	CSB-PA14129A0Rb
Storage	Upon receipt, store at -20°C or -80°C. Avoid repeated freeze.
Uniprot No.	Q12879
Immunogen	Recombinant Human Glutamate receptor ionotropic, NMDA 2A protein (501-750AA)
Raised In	Rabbit
Species Reactivity	Human, Mouse, Rat
Tested Applications	ELISA, WB, IHC, IF; Recommended dilution: WB:1:500-1:5000, IHC:1:20-1:200, IF:1:50-1:200
Form	Liquid
Conjugate	Non-conjugated
Storage Buffer	Preservative: 0.03% Proclin 300 Constituents: 50% Glycerol, 0.01M PBS, PH 7.4
Purification Method	>95%, Protein G purified
Isotype	IgG
Clonality	Polyclonal
Alias	Glutamate receptor ionotropic, NMDA 2A (GluN2A) (Glutamate [NMDA] receptor subunit epsilon-1) (N-methyl D-aspartate receptor subtype 2A) (NMDAR2A) (NR2A) (hNR2A), GRIN2A, NMDAR2A
Immunogen Species	Homo sapiens (Human)
Research Area	Neuroscience
Target Names	GRIN2A

Image



Western Blot

Positive WB detected in: U87 whole cell lysate, Rat heart tissue, Mouse liver tissue

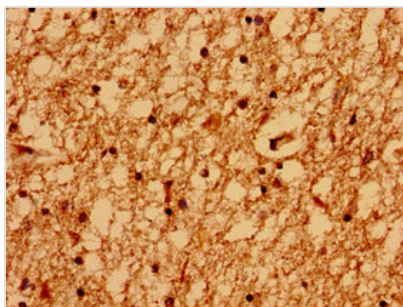
All lanes: GRIN2A antibody at 3.2µg/ml

Secondary

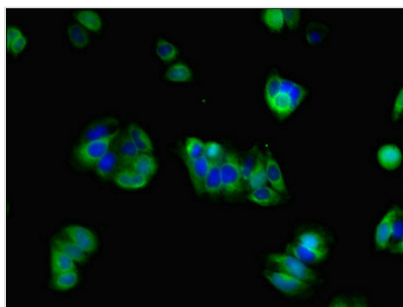
Goat polyclonal to rabbit IgG at 1/50000 dilution

Predicted band size: 166, 145 kDa

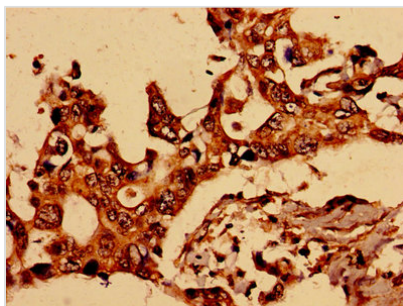
Observed band size: 166 kDa



Immunohistochemistry of paraffin-embedded human brain tissue using CSB-PA14129A0Rb at dilution of 1:100



Immunofluorescent analysis of HepG2 cells using CSB-PA14129A0Rb at dilution of 1:100 and Alexa Fluor 488-conjugated AffiniPure Goat Anti-Rabbit IgG(H+L)



Immunohistochemistry of paraffin-embedded human pancreatic cancer using CSB-PA14129A0Rb at dilution of 1:100

Usage

For Research Use Only. Not for use in diagnostic or therapeutic procedures.