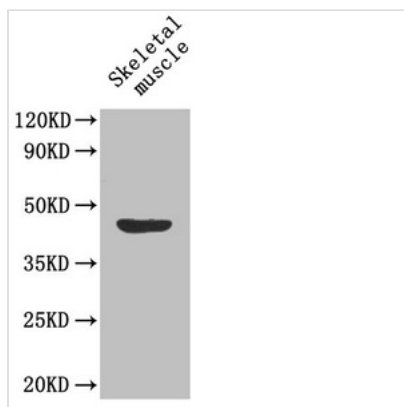




MFGE8 Antibody

Product Code	CSB-PA07974A0Rb
Storage	Upon receipt, store at -20°C or -80°C. Avoid repeated freeze.
Uniprot No.	Q08431
Immunogen	Recombinant Human Lactadherin protein (25-334AA)
Raised In	Rabbit
Species Reactivity	Human, Mouse
Tested Applications	ELISA, WB, IHC; Recommended dilution: WB:1:500-1:5000, IHC:1:20-1:200
Form	Liquid
Conjugate	Non-conjugated
Storage Buffer	Preservative: 0.03% Proclin 300 Constituents: 50% Glycerol, 0.01M PBS, PH 7.4
Purification Method	>95%, Protein G purified
Isotype	IgG
Clonality	Polyclonal
Alias	Lactadherin (Breast epithelial antigen BA46) (HMFG) (MFGM) (Milk fat globule-EGF factor 8) (MFG-E8) (SED1) [Cleaved into: Lactadherin short form; Medin], MFGE8
Immunogen Species	Homo sapiens (Human)
Research Area	Microbiology
Target Names	MFGE8

Image



Western Blot

Positive WB detected in: Mouse skeletal muscle tissue

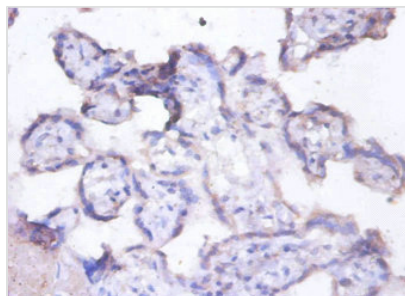
All lanes: MFGE8 antibody at 1.6µg/ml

Secondary

Goat polyclonal to rabbit IgG at 1/50000 dilution

Predicted band size: 44, 32, 38, 39 kDa

Observed band size: 44 kDa



Immunohistochemistry of paraffin-embedded human placenta tissue using CSB-PA07974A0Rb at dilution of 1:100

Usage

For Research Use Only. Not for use in diagnostic or therapeutic procedures.