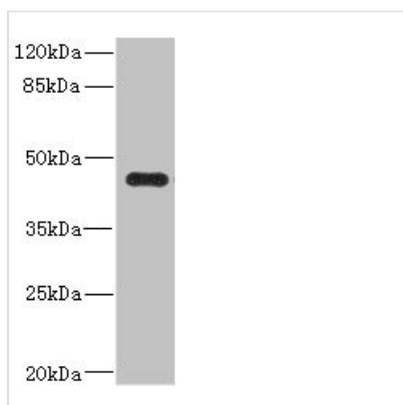




Ren2 Antibody

Product Code	CSB-PA17059A0Rb
Storage	Upon receipt, store at -20°C or -80°C. Avoid repeated freeze.
Uniprot No.	P00796
Immunogen	Recombinant Mouse Renin-2 protein (64-351AA)
Raised In	Rabbit
Species Reactivity	Mouse, Human
Tested Applications	ELISA, WB; Recommended dilution: WB:1:1000-1:5000
Form	Liquid
Conjugate	Non-conjugated
Storage Buffer	Preservative: 0.03% Proclin 300 Constituents: 50% Glycerol, 0.01M PBS, PH 7.4
Purification Method	>95%, Protein G purified
Isotype	IgG
Clonality	Polyclonal
Alias	Renin-2 (EC 3.4.23.15) (Angiotensinogenase) (Submandibular gland renin) [Cleaved into: Renin-2 heavy chain; Renin-2 light chain], Ren2, Ren-2
Immunogen Species	Mus musculus (Mouse)
Research Area	Cardiovascular
Target Names	Ren2

Image



Western blot

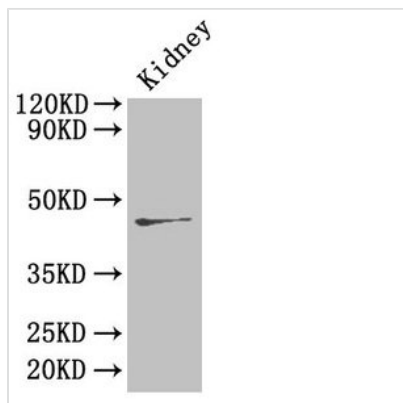
All lanes: Ren2 antibody at 2µg/ml + MCF-7 whole cell lysate

Secondary

Goat polyclonal to rabbit IgG at 1/10000 dilution

Predicted band size: 45 kDa

Observed band size: 45 kDa

**Western Blot**

Positive WB detected in: Mouse kidney tissue

All lanes: Ren2 antibody at 4 μ g/ml

Secondary

Goat polyclonal to rabbit IgG at 1/50000 dilution

Predicted band size: 45 kDa

Observed band size: 45 kDa

Usage

For Research Use Only. Not for use in diagnostic or therapeutic procedures.