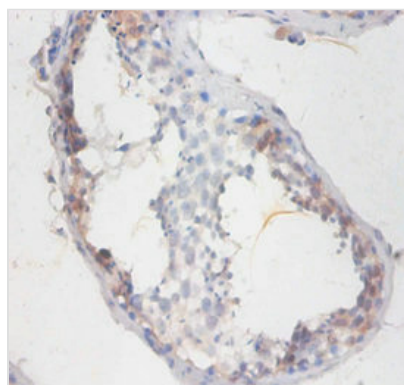




SMCP Antibody

Product Code	CSB-PA021820DA01HU
Storage	Upon receipt, store at -20°C or -80°C. Avoid repeated freeze.
Uniprot No.	P49901
Immunogen	Recombinant Human Sperm mitochondrial-associated cysteine-rich protein (1-116AA)
Raised In	Rabbit
Species Reactivity	Human
Tested Applications	ELISA, IHC; Recommended dilution: IHC:1:20-1:200
Form	Liquid
Conjugate	Non-conjugated
Storage Buffer	Preservative: 0.03% Proclin 300 Constituents: 50% Glycerol, 0.01M PBS, PH 7.4
Purification Method	>95%, Protein G purified
Isotype	IgG
Clonality	Polyclonal
Alias	Sperm mitochondrial-associated cysteine-rich protein, SMCP, MCS MCSP
Immunogen Species	Homo sapiens (Human)
Research Area	Stem Cells
Target Names	SMCP

Image



Immunohistochemistry of paraffin-embedded human testis tissue using CSB-PA021820DA01HU at dilution of 1:100

Usage For Research Use Only. Not for use in diagnostic or therapeutic procedures.