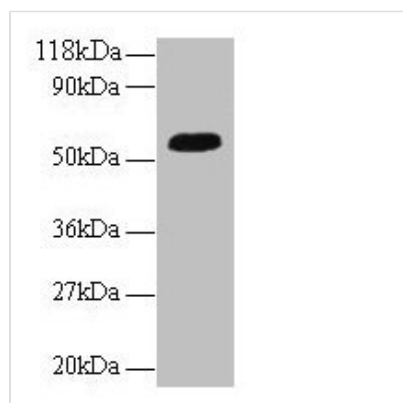




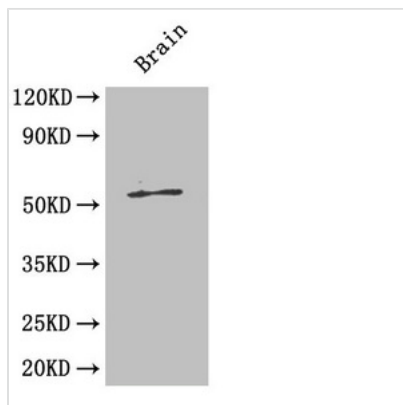
# ICA1 Antibody

<b>Product Code</b>	CSB-PA12109A0Rb
<b>Storage</b>	Upon receipt, store at -20°C or -80°C. Avoid repeated freeze.
<b>Uniprot No.</b>	Q05084
<b>Immunogen</b>	Recombinant Human Islet cell autoantigen 1 protein (1-268AA)
<b>Raised In</b>	Rabbit
<b>Species Reactivity</b>	Human, Mouse
<b>Tested Applications</b>	ELISA, WB, IHC; Recommended dilution: WB:1:1000-1:5000, IHC:1:20-1:200
<b>Form</b>	Liquid
<b>Conjugate</b>	Non-conjugated
<b>Storage Buffer</b>	Preservative: 0.03% Proclin 300 Constituents: 50% Glycerol, 0.01M PBS, PH 7.4
<b>Purification Method</b>	>95%, Protein G purified
<b>Isotype</b>	IgG
<b>Clonality</b>	Polyclonal
<b>Alias</b>	Islet cell autoantigen 1 (69 kDa islet cell autoantigen) (ICA69) (Islet cell autoantigen p69) (ICAp69) (p69), ICA1
<b>Immunogen Species</b>	Homo sapiens (Human)
<b>Research Area</b>	Neuroscience
<b>Target Names</b>	ICA1

## Image



Western blot  
 All lanes: ICA1 antibody at 2µg/ml + A549 whole cell lysate  
 Secondary  
 Goat polyclonal to rabbit IgG at 1/10000 dilution  
 Predicted band size: 55, 58 kDa  
 Observed band size: 55 kDa

**Western Blot**

Positive WB detected in: Mouse brain tissue

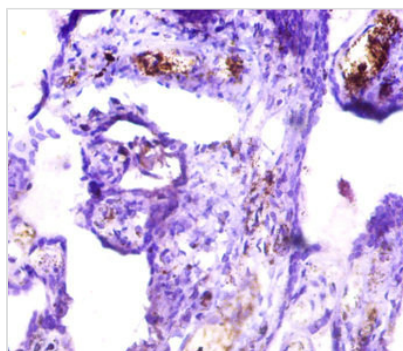
All lanes: ICA1 antibody at 4 $\mu$ g/ml

Secondary

Goat polyclonal to rabbit IgG at 1/50000 dilution

Predicted band size: 55, 58 kDa

Observed band size: 55 kDa



Immunohistochemistry of paraffin-embedded

human placenta tissue using CSB-

PA12109A0Rb at dilution of 1:50

**Usage**

For Research Use Only. Not for use in diagnostic or therapeutic procedures.