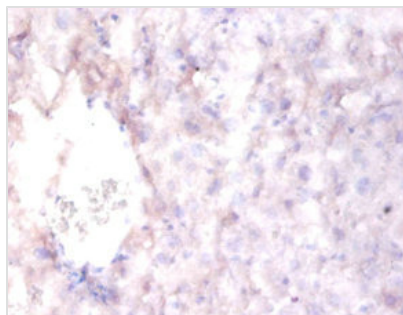




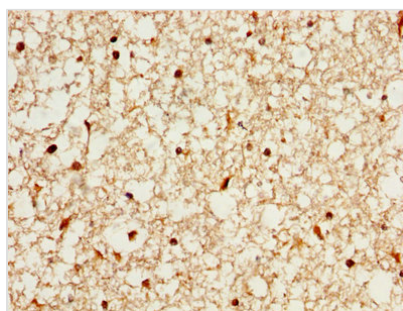
RELN Antibody

Product Code	CSB-PA019557LA01HU
Storage	Upon receipt, store at -20°C or -80°C. Avoid repeated freeze.
Uniprot No.	P78509
Immunogen	Recombinant Human Reelin protein (26-254AA)
Raised In	Rabbit
Species Reactivity	Human
Tested Applications	ELISA, IHC; Recommended dilution: IHC:1:20-1:500
Form	Liquid
Conjugate	Non-conjugated
Storage Buffer	Preservative: 0.03% Proclin 300 Constituents: 50% Glycerol, 0.01M PBS, PH 7.4
Purification Method	>95%, Protein G purified
Isotype	IgG
Clonality	Polyclonal
Alias	Reelin (EC 3.4.21.-), RELN
Immunogen Species	Homo sapiens (Human)
Research Area	Neuroscience
Target Names	RELN

Image



Immunohistochemistry of paraffin-embedded mouse liver tissue using CSB-PA019557LA01HU at dilution of 1:100



IHC image of CSB-PA019557LA01HU diluted at 1:200 and staining in paraffin-embedded human brain tissue performed on a Leica BondTM system. After dewaxing and hydration, antigen retrieval was mediated by high pressure in a citrate buffer (pH 6.0). Section was blocked with 10% normal goat serum 30min at RT. Then primary antibody (1% BSA) was incubated at 4°C overnight. The primary is detected by a biotinylated secondary antibody and visualized using an HRP conjugated SP system.