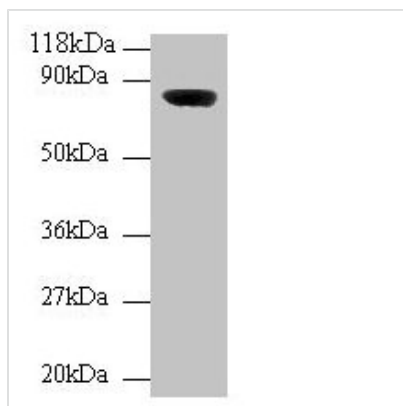




Wdpcp Antibody

| | |
|----------------------------|--|
| Product Code | CSB-PA804911EA01MO |
| Storage | Upon receipt, store at -20°C or -80°C. Avoid repeated freeze. |
| Uniprot No. | Q8C456 |
| Immunogen | Recombinant Mouse WD repeat-containing and planar cell polarity effector protein fritz homolog protein (1-722AA) |
| Raised In | Rabbit |
| Species Reactivity | Mouse |
| Tested Applications | ELISA, WB; Recommended dilution: WB:1:1000-1:5000 |
| Form | Liquid |
| Conjugate | Non-conjugated |
| Storage Buffer | 0.1mol/L NaCl, 15mmol/L NaN ₃ , pH 7.2. |
| Purification Method | >95%, Protein G purified |
| Isotype | IgG |
| Clonality | Polyclonal |
| Product Type | Polyclonal Antibody |
| Immunogen Species | Mus musculus (Mouse) |
| Research Area | Cell Biology |
| Target Names | Wdpcp |

Image



Western blot

All lanes: Wdpcp antibody at 2µg/ml + Mouse brain tissue

Secondary

Goat polyclonal to rabbit IgG at 1/10000 dilution

Predicted band size: 82, 73 kDa

Observed band size: 82 kDa

Usage

For Research Use Only. Not for use in diagnostic or therapeutic procedures.