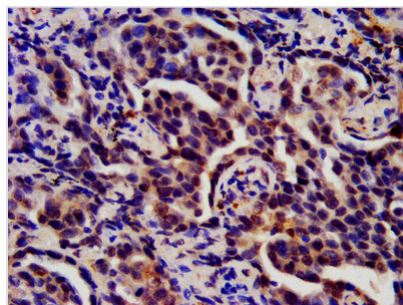




S100A8 Antibody

Product Code	CSB-PA020641HA01HU
Storage	Upon receipt, store at -20°C or -80°C. Avoid repeated freeze.
Uniprot No.	P05109
Immunogen	Recombinant Human Protein S100-A8 protein (1-93AA)
Raised In	Rabbit
Species Reactivity	Human
Tested Applications	ELISA, IHC; Recommended dilution: IHC:1:200-1:500
Form	Liquid
Conjugate	Non-conjugated
Storage Buffer	Preservative: 0.03% Proclin 300 Constituents: 50% Glycerol, 0.01M PBS, PH 7.4
Purification Method	>95%, Protein G purified
Isotype	IgG
Clonality	Polyclonal
Alias	Protein S100-A8 (Calgranulin-A) (Calprotectin L1L subunit) (Cystic fibrosis antigen) (CFAG) (Leukocyte L1 complex light chain) (Migration inhibitory factor-related protein 8) (MRP-8) (p8) (S100 calcium-binding protein A8) (Urinary stone protein band A), S100A8, CAGA CFAG MRP8
Immunogen Species	Homo sapiens (Human)
Research Area	Neuroscience
Target Names	S100A8

Image



IHC image of CSB-PA020641HA01HU diluted at 1:200 and staining in paraffin-embedded human lung cancer performed on a Leica BondTM system. After dewaxing and hydration, antigen retrieval was mediated by high pressure in a citrate buffer (pH 6.0). Section was blocked with 10% normal goat serum 30min at RT. Then primary antibody (1% BSA) was incubated at 4°C overnight. The primary is detected by a biotinylated secondary antibody and visualized using an HRP conjugated SP system.