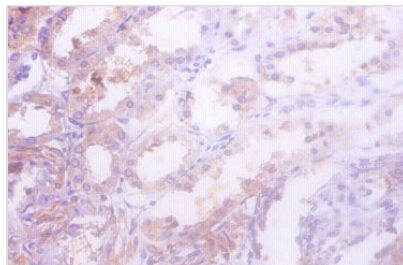




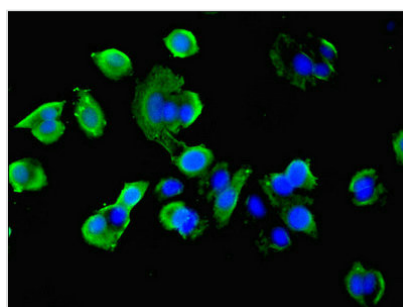
# Idh1 Antibody

<b>Product Code</b>	CSB-PA010989LA01MO
<b>Storage</b>	Upon receipt, store at -20°C or -80°C. Avoid repeated freeze.
<b>Uniprot No.</b>	O88844
<b>Immunogen</b>	Recombinant Mouse Isocitrate dehydrogenase [NADP] cytoplasmic protein (1-240AA)
<b>Raised In</b>	Rabbit
<b>Species Reactivity</b>	Mouse
<b>Tested Applications</b>	ELISA, IHC, IF; Recommended dilution: IHC:1:20-1:200, IF:1:50-1:200
<b>Form</b>	Liquid
<b>Conjugate</b>	Non-conjugated
<b>Storage Buffer</b>	Preservative: 0.03% Proclin 300 Constituents: 50% Glycerol, 0.01M PBS, PH 7.4
<b>Purification Method</b>	>95%, Protein G purified
<b>Isotype</b>	IgG
<b>Clonality</b>	Polyclonal
<b>Alias</b>	Isocitrate dehydrogenase [NADP] cytoplasmic (IDH) (EC 1.1.1.42) (Cytosolic NADP-isocitrate dehydrogenase) (IDP) (NADP(+)-specific ICDH) (Oxalosuccinate decarboxylase), Idh1
<b>Immunogen Species</b>	Mus musculus (Mouse)
<b>Research Area</b>	Signal Transduction
<b>Target Names</b>	Idh1

## Image



Immunohistochemistry of paraffin-embedded human kidney tissue using CSB-PA010989LA01MO at dilution of 1:50



Immunofluorescent analysis of MCF-7 cells using CSB-PA010989LA01MO at dilution of 1:100 and Alexa Fluor 488-conjugated AffiniPure Goat Anti-Rabbit IgG(H+L)



---

**Usage**

For Research Use Only. Not for use in diagnostic or therapeutic procedures.