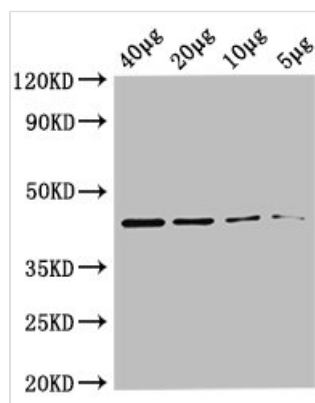




# metC Antibody, Biotin conjugated

<b>Product Code</b>	CSB-PA14479D0Rb
<b>Storage</b>	Upon receipt, store at -20°C or -80°C. Avoid repeated freeze.
<b>Uniprot No.</b>	P06721
<b>Immunogen</b>	Recombinant Escherichia coli Cystathionine beta-lyase MetC protein (1-392AA)
<b>Raised In</b>	Rabbit
<b>Species Reactivity</b>	Escherichia coli
<b>Tested Applications</b>	ELISA, WB; Recommended dilution: WB:1:500-1:5000
<b>Form</b>	Liquid
<b>Conjugate</b>	Biotin
<b>Storage Buffer</b>	Preservative: 0.03% Proclin 300 Constituents: 50% Glycerol, 0.01M PBS, PH 7.4
<b>Purification Method</b>	>95%, Protein G purified
<b>Isotype</b>	IgG
<b>Clonality</b>	Polyclonal
<b>Alias</b>	Cystathionine beta-lyase MetC (CBL) (CL) (EC 4.4.1.8) (Beta-cystathionase) (Cysteine desulfhydrase) (CD) (EC 4.4.1.28) (Cysteine lyase), metC
<b>Immunogen Species</b>	Escherichia coli
<b>Research Area</b>	Signal Transduction
<b>Target Names</b>	metC

## Image



### Western Blot

Positive WB detected in: Rosseta bacteria lysate at 40µg, 20µg, 10µg, 5µg

All lanes: metC antibody at 0.36µg/ml

Secondary

Goat polyclonal to rabbit IgG at 1/50000 dilution

Predicted band size: 44 kDa

Observed band size: 44 kDa

## Usage

For Research Use Only. Not for use in diagnostic or therapeutic procedures.