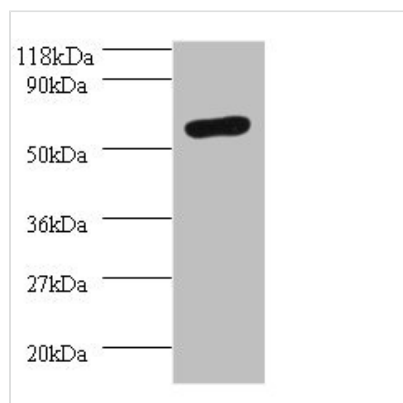




# SEPSECS Antibody

<b>Product Code</b>	CSB-PA14389A0Rb
<b>Storage</b>	Upon receipt, store at -20°C or -80°C. Avoid repeated freeze.
<b>Uniprot No.</b>	Q9HD40
<b>Immunogen</b>	Recombinant Human O-phosphoseryl-tRNA(Sec) selenium transferase protein (5-451AA)
<b>Raised In</b>	Rabbit
<b>Species Reactivity</b>	Human
<b>Tested Applications</b>	ELISA, WB, IHC, IF; Recommended dilution: WB:1:500-1:2000, IHC:1:20-1:200, IF:1:50-1:200
<b>Form</b>	Liquid
<b>Conjugate</b>	Non-conjugated
<b>Storage Buffer</b>	Preservative: 0.03% Proclin 300 Constituents: 50% Glycerol, 0.01M PBS, PH 7.4
<b>Purification Method</b>	>95%, Protein G purified
<b>Isotype</b>	IgG
<b>Clonality</b>	Polyclonal
<b>Alias</b>	O-phosphoseryl-tRNA(Sec) selenium transferase (EC 2.9.1.2) (Liver-pancreas antigen) (LP) (SLA-p35) (SLA/LP autoantigen) (Selenocysteine synthase) (Sec synthase) (Selenocysteinyl-tRNA(Sec) synthase) (Sep-tRNA:Sec-tRNA synthase) (SepSecS) (Soluble liver antigen) (SLA) (UGA suppressor tRNA-associated protein) (tRNA(Ser/Sec)-associated antigenic protein), SEPSECS, TRNP48
<b>Immunogen Species</b>	Homo sapiens (Human)
<b>Research Area</b>	Epigenetics and Nuclear Signaling
<b>Target Names</b>	SEPSECS

## Image



Western blot

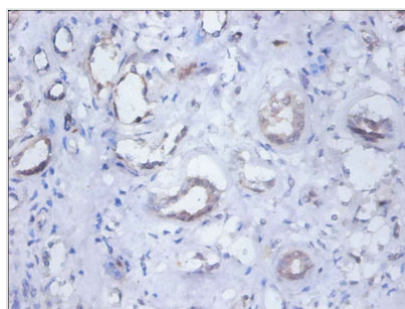
All lanes: SEPSECS antibody at 2µg/ml + 293T whole cell lysate

Secondary

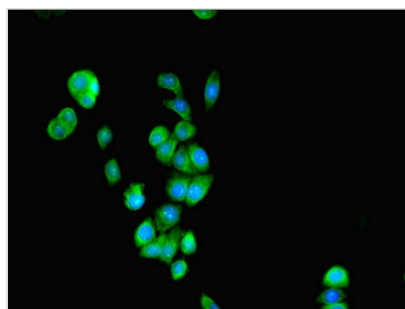
Goat polyclonal to rabbit IgG at 1/10000 dilution

Predicted band size: 56, 6 kDa

Observed band size: 56 kDa



Immunohistochemistry of paraffin-embedded human kidney tissue using CSB-PA14389A0Rb at dilution of 1:100



Immunofluorescent analysis of PC-3 cells using CSB-PA14389A0Rb at dilution of 1:100 and Alexa Fluor 488-conjugated AffiniPure Goat Anti-Rabbit IgG(H+L)

## Usage

For Research Use Only. Not for use in diagnostic or therapeutic procedures.