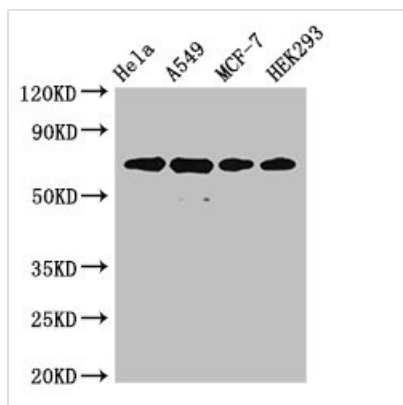




XRCC6 Antibody

Product Code	CSB-PA01617A0Rb
Storage	Upon receipt, store at -20°C or -80°C. Avoid repeated freeze.
Uniprot No.	P12956
Immunogen	Recombinant Human X-ray repair cross-complementing protein 6 ptein (2-609AA)
Raised In	Rabbit
Species Reactivity	Human
Tested Applications	ELISA, WB, IHC, IF; Recommended dilution: WB:1:500-1:5000, IHC:1:20-1:200, IF:1:50-1:200
Form	Liquid
Conjugate	Non-conjugated
Storage Buffer	Preservative: 0.03% Proclin 300 Constituents: 50% Glycerol, 0.01M PBS, PH 7.4
Purification Method	>95%, Protein G purified
Isotype	IgG
Clonality	Polyclonal
Alias	X-ray repair cross-complementing protein 6 (EC 3.6.4.-) (EC 4.2.99.-) (5'-deoxyribose-5-phosphate lyase Ku70) (5'-dRP lyase Ku70) (70 kDa subunit of Ku antigen) (ATP-dependent DNA helicase 2 subunit 1) (ATP-dependent DNA helicase II 70 kDa subunit) (CTC box-binding factor 75 kDa subunit) (CTC75) (CTCBF) (DNA repair protein XRCC6) (Lupus Ku autoantigen protein p70) (Ku70) (Thyroid-lupus autoantigen) (TLAA) (X-ray repair complementing defective repair in Chinese hamster cells 6), XRCC6, G22P1
Immunogen Species	Homo sapiens (Human)
Research Area	Epigenetics and Nuclear Signaling
Target Names	XRCC6

Image



Western Blot

Positive WB detected in: HeLa whole cell lysate, A549 whole cell lysate, MCF-7 whole cell lysate, HEK293 whole cell lysate

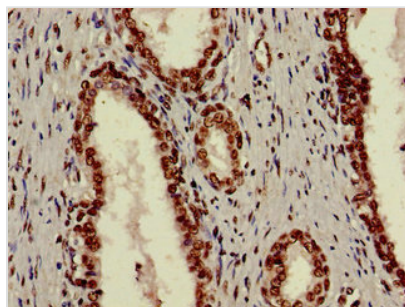
All lanes: XRCC6 antibody at 4µg/ml

Secondary

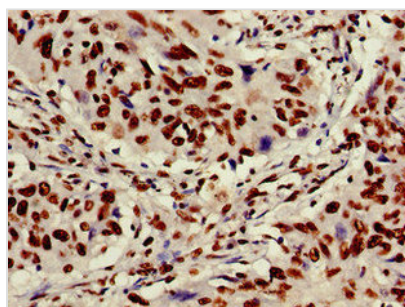
Goat polyclonal to rabbit IgG at 1/50000 dilution

Predicted band size: 70, 66 kDa

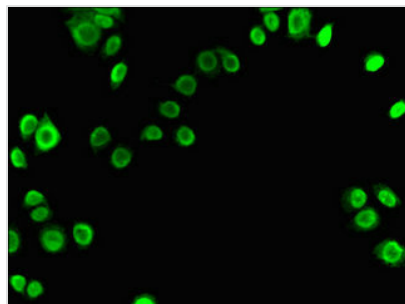
Observed band size: 70 kDa



Immunohistochemistry of paraffin-embedded human prostate cancer using CSB-PA01617A0Rb at dilution of 1:100



Immunohistochemistry of paraffin-embedded human lung cancer using CSB-PA01617A0Rb at dilution of 1:100



Immunofluorescent analysis of PC-3 cells using CSB-PA01617A0Rb at dilution of 1:100 and Alexa Fluor 488-conjugated AffiniPure Goat Anti-Rabbit IgG(H+L)

Usage

For Research Use Only. Not for use in diagnostic or therapeutic procedures.