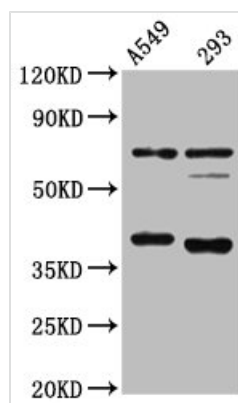




# CTSS Antibody

<b>Product Code</b>	CSB-PA10729A0Rb
<b>Storage</b>	Upon receipt, store at -20°C or -80°C. Avoid repeated freeze.
<b>Uniprot No.</b>	P25774
<b>Immunogen</b>	Recombinant Human Cathepsin S protein (115-331AA)
<b>Raised In</b>	Rabbit
<b>Species Reactivity</b>	Human
<b>Tested Applications</b>	ELISA, WB, IHC; Recommended dilution: WB:1:1000-1:5000, IHC:1:20-1:200
<b>Form</b>	Liquid
<b>Conjugate</b>	Non-conjugated
<b>Storage Buffer</b>	Preservative: 0.03% Proclin 300 Constituents: 50% Glycerol, 0.01M PBS, PH 7.4
<b>Purification Method</b>	>95%, Protein G purified
<b>Isotype</b>	IgG
<b>Clonality</b>	Polyclonal
<b>Alias</b>	Cathepsin S (EC 3.4.22.27), CTSS
<b>Immunogen Species</b>	Homo sapiens (Human)
<b>Research Area</b>	Immunology
<b>Target Names</b>	CTSS

## Image



### Western Blot

Positive WB detected in: A549 whole cell lysate, 293 whole cell lysate

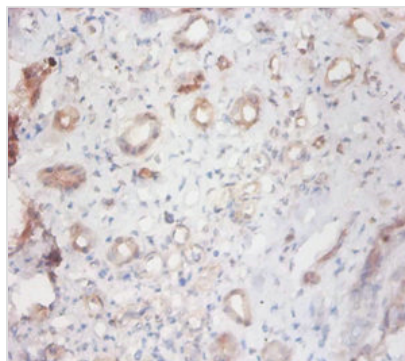
All lanes: CTSS antibody at 1:4000

Secondary

Goat polyclonal to rabbit IgG at 1/50000 dilution

Predicted band size: 38, 32 kDa

Observed band size: 38 kDa



Immunohistochemistry of paraffin-embedded human kidney tissue using CSB-PA10729A0Rb at dilution of 1:100