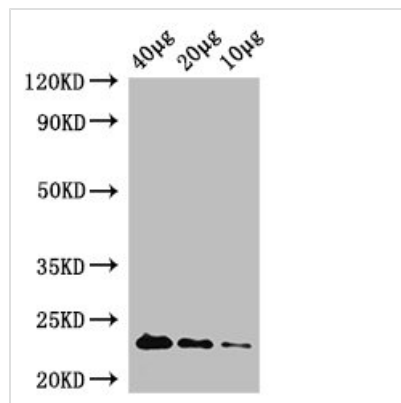




# rpiA Antibody, Biotin conjugated

<b>Product Code</b>	CSB-PA540419DD01ENT
<b>Storage</b>	Upon receipt, store at -20°C or -80°C. Avoid repeated freeze.
<b>Uniprot No.</b>	P0A7Z0
<b>Immunogen</b>	Recombinant Escherichia coli Ribose-5-phosphate isomerase A protein (1-219AA)
<b>Raised In</b>	Rabbit
<b>Species Reactivity</b>	Escherichia coli
<b>Tested Applications</b>	ELISA, WB; Recommended dilution: WB:1:200-1:2000
<b>Form</b>	Liquid
<b>Conjugate</b>	Biotin
<b>Storage Buffer</b>	Preservative: 0.03% Proclin 300 Constituents: 50% Glycerol, 0.01M PBS, PH 7.4
<b>Purification Method</b>	>95%, Protein G purified
<b>Isotype</b>	IgG
<b>Clonality</b>	Polyclonal
<b>Alias</b>	Ribose-5-phosphate isomerase A (EC 5.3.1.6) (Phosphoriboisomerase A) (PRI), rpiA, ygfC
<b>Immunogen Species</b>	Escherichia coli
<b>Research Area</b>	Signal Transduction
<b>Target Names</b>	rpiA

## Image



### Western Blot

Positive WB detected in: Rosseta bacteria lysate at 40µg, 20µg, 10µg

All lanes: rpiA antibody at 1µg/ml

Secondary

Goat polyclonal to rabbit IgG at 1/50000 dilution

Predicted band size: 23 kDa

Observed band size: 23 kDa

## Usage

For Research Use Only. Not for use in diagnostic or therapeutic procedures.