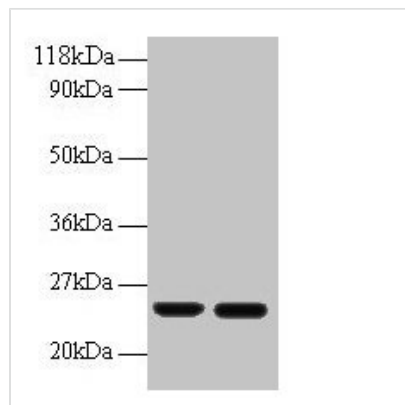




# RBP4 Antibody

<b>Product Code</b>	CSB-PA07057A0Rb
<b>Storage</b>	Upon receipt, store at -20°C or -80°C. Avoid repeated freeze.
<b>Uniprot No.</b>	P02753
<b>Immunogen</b>	Recombinant Human Retinol-binding protein 4 protein (19-201AA)
<b>Raised In</b>	Rabbit
<b>Species Reactivity</b>	Human
<b>Tested Applications</b>	ELISA, WB, IHC; Recommended dilution: WB:1:1000-1:5000, IHC:1:20-1:200
<b>Form</b>	Liquid
<b>Conjugate</b>	Non-conjugated
<b>Storage Buffer</b>	Preservative: 0.03% Proclin 300 Constituents: 50% Glycerol, 0.01M PBS, PH 7.4
<b>Purification Method</b>	>95%, Protein G purified
<b>Isotype</b>	IgG
<b>Clonality</b>	Polyclonal
<b>Alias</b>	Retinol-binding protein 4 (Plasma retinol-binding protein) (PRBP) (RBP) [Cleaved into: Plasma retinol-binding protein(1-182); Plasma retinol-binding protein(1-181); Plasma retinol-binding protein(1-179); Plasma retinol-binding protein(1-176)], RBP4
<b>Immunogen Species</b>	Homo sapiens (Human)
<b>Research Area</b>	Cardiovascular
<b>Target Names</b>	RBP4

## Image



### Western blot

All lanes: RBP4 antibody at 2µg/ml

Lane 1: Human positive serum at 1: 10

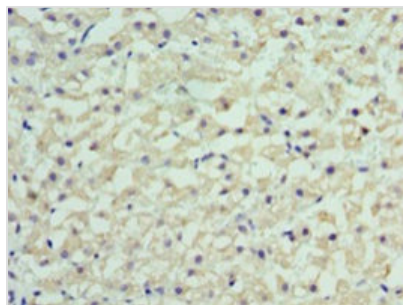
Lane 2: Human positive serum at 1: 100

Secondary

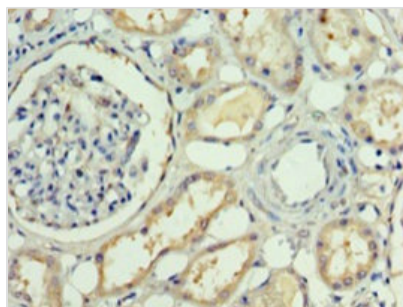
Goat polyclonal to rabbit IgG at 1/50000 dilution

Predicted band size: 24 kDa

Observed band size: 24 kDa



Immunohistochemistry of paraffin-embedded human liver cancer using CSB-PA07057A0Rb at dilution of 1:100



Immunohistochemistry of paraffin-embedded human kidney tissue using CSB-PA07057A0Rb at dilution of 1:100