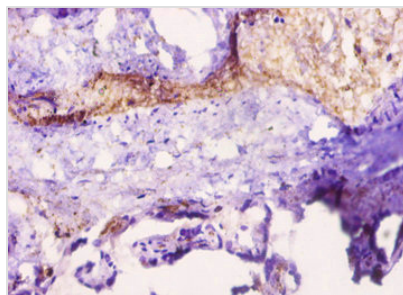




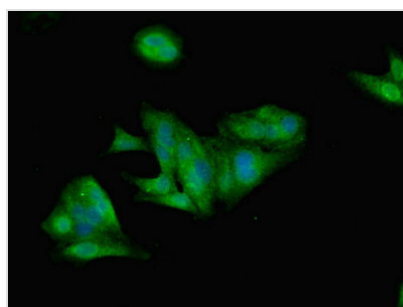
LEP Antibody

Product Code	CSB-PA06799A0Rb
Storage	Upon receipt, store at -20°C or -80°C. Avoid repeated freeze.
Uniprot No.	P41159
Immunogen	Recombinant Human Leptin protein (29-164AA)
Raised In	Rabbit
Species Reactivity	Human
Tested Applications	ELISA, IHC, IF; Recommended dilution: IHC:1:10-1:100, IF:1:50-1:200
Form	Liquid
Conjugate	Non-conjugated
Storage Buffer	Preservative: 0.03% Proclin 300 Constituents: 50% Glycerol, 0.01M PBS, PH 7.4
Purification Method	>95%, Protein G purified
Isotype	IgG
Clonality	Polyclonal
Alias	Leptin (Obese protein) (Obesity factor), LEP, OB OBS
Immunogen Species	Homo sapiens (Human)
Research Area	Signal Transduction
Target Names	LEP

Image



Immunohistochemistry of paraffin-embedded human placenta tissue using CSB-PA06799A0Rb at dilution of 1:10



Immunofluorescent analysis of HeLa cells using CSB-PA06799A0Rb at dilution of 1:100 and Alexa Fluor 488-conjugated AffiniPure Goat Anti-Rabbit IgG(H+L)