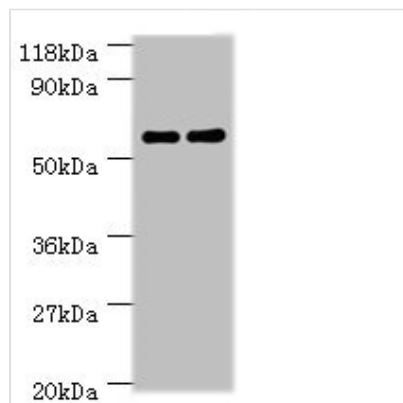




Ces1c Antibody

| | |
|----------------------------|--|
| Product Code | CSB-PA338557YA01MO |
| Storage | Upon receipt, store at -20°C or -80°C. Avoid repeated freeze. |
| Uniprot No. | P23953 |
| Immunogen | Recombinant Mouse Carboxylesterase 1C protein (19-550AA) |
| Raised In | Rabbit |
| Species Reactivity | Mouse, Human, Rat |
| Tested Applications | ELISA, WB, IHC; Recommended dilution: WB:1:1000-1:5000, IHC:1:10-1:200 |
| Form | Liquid |
| Conjugate | Non-conjugated |
| Storage Buffer | Preservative: 0.03% Proclin 300 Constituents: 50% Glycerol, 0.01M PBS, PH 7.4 |
| Purification Method | >95%, Protein G purified |
| Isotype | IgG |
| Clonality | Polyclonal |
| Alias | Carboxylesterase 1C (EC 3.1.1.1) (Liver carboxylesterase N) (Lung surfactant convertase) (PES-N), Ces1c, Es1 |
| Immunogen Species | Mouse |
| Research Area | Others |
| Target Names | Ces1c |

Image



Western blot

All lanes: Ces1c antibody at 2µg/ml

Lane 1: Mouse liver tissue

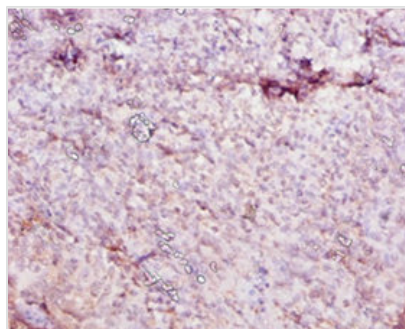
Lane 2: Rat liver tissue

Secondary

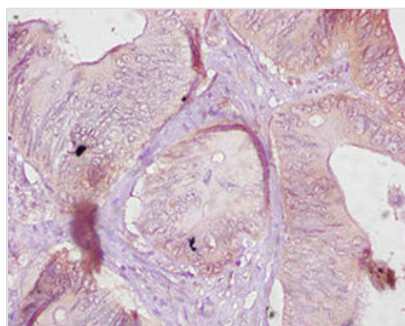
Goat polyclonal to rabbit IgG at 1/10000 dilution

Predicted band size: 62 kDa

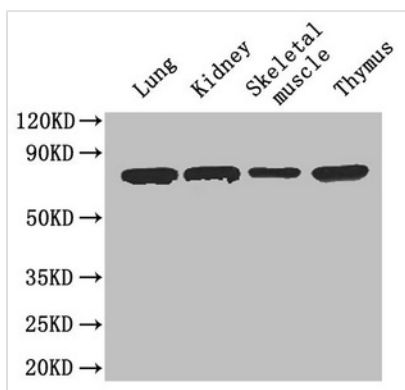
Observed band size: 62 kDa



Immunohistochemistry of paraffin-embedded human tonsil tissue using CSB-PA338557YA01MO at dilution of 1:10



Immunohistochemistry of paraffin-embedded human colon cancer using CSB-PA338557YA01MO at dilution of 1:10



Western Blot

Positive WB detected in: Mouse lung tissue, Mouse kidney tissue, Mouse skeletal muscle tissue, Mouse thymus tissue

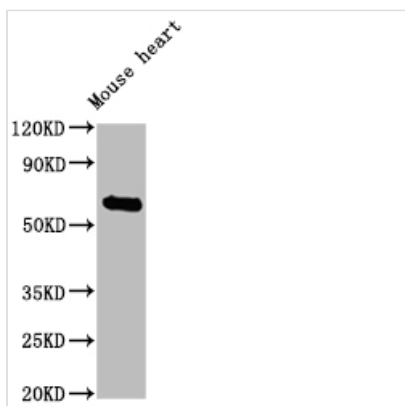
All lanes: Ces1c antibody at 4µg/ml

Secondary

Goat polyclonal to rabbit IgG at 1/50000 dilution

Predicted band size: 62 kDa

Observed band size: 62 kDa



Western Blot

Positive WB detected in: Mouse heart tissue

All lanes: Ces1c antibody at 1:2000

Secondary

Goat polyclonal to rabbit IgG at 1/50000 dilution

Predicted band size: 62 kDa

Observed band size: 62 kDa

Usage

For Research Use Only. Not for use in diagnostic or therapeutic procedures.