



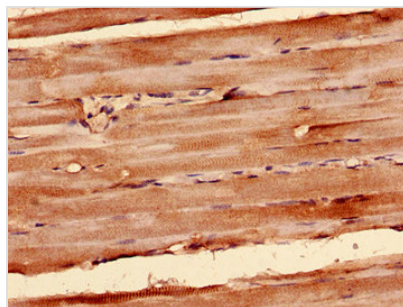
SDHA Antibody

Product Code	CSB-PA01985A0Rb
Storage	Upon receipt, store at -20°C or -80°C. Avoid repeated freeze.
Uniprot No.	P31040
Immunogen	Recombinant Human Succinate dehydrogenase [ubiquinone] flavoprotein subunit, mitochondrial protein (44-293AA)
Raised In	Rabbit
Species Reactivity	Human
Tested Applications	ELISA, WB, IHC, IF; Recommended dilution: WB:1:500-1:5000, IHC:1:20-1:200, IF:1:50-1:200
Form	Liquid
Conjugate	Non-conjugated
Storage Buffer	Preservative: 0.03% Proclin 300 Constituents: 50% Glycerol, 0.01M PBS, PH 7.4
Purification Method	>95%, Protein G purified
Isotype	IgG
Clonality	Polyclonal
Alias	Succinate dehydrogenase [ubiquinone] flavoprotein subunit, mitochondrial (EC 1.3.5.1) (Flavoprotein subunit of complex II) (Fp), SDHA, SDH2 SDHF
Immunogen Species	Homo sapiens (Human)
Research Area	Tags & Cell Markers
Target Names	SDHA

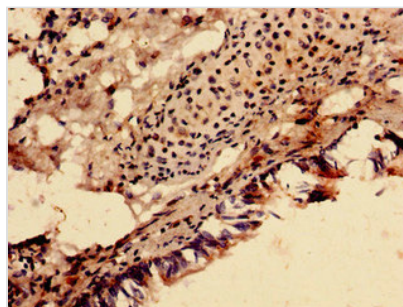
Image



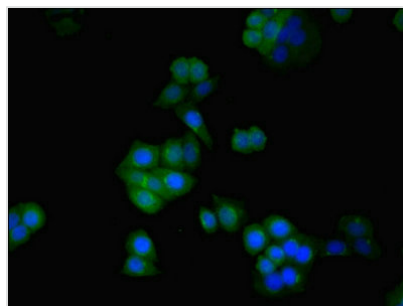
Western blot
All lanes: SDHA antibody at 2µg/ml + 293T whole cell lysate
Secondary
Goat polyclonal to rabbit IgG at 1/15000 dilution
Predicted band size: 73, 68, 57 kDa
Observed band size: 73, 57 kDa



Immunocytochemistry analysis of human skeletal muscle tissue using CSB-PA01985A0Rb at dilution of 1:100



Immunocytochemistry analysis of human lung tissue using CSB-PA01985A0Rb at dilution of 1:100



Immunofluorescent analysis of PC-3 cells using CSB-PA01985A0Rb at dilution of 1:100 and Alexa Fluor 488-conjugated AffiniPure Goat Anti-Rabbit IgG(H+L)