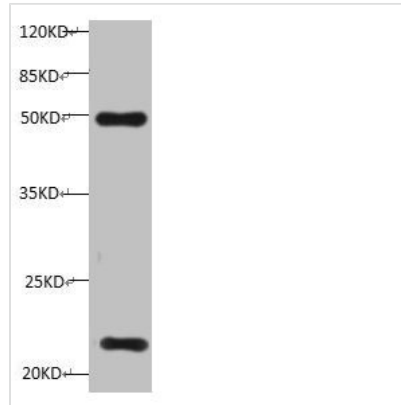


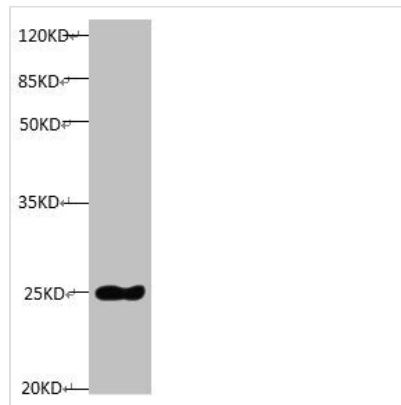


# TIMP1 Monoclonal Antibody

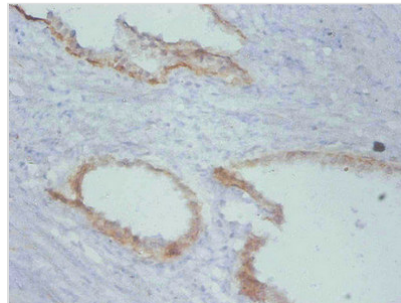
<b>Product Code</b>	CSB-MA0235601A0m
<b>Storage</b>	Upon receipt, store at -20°C or -80°C. Avoid repeated freeze.
<b>Uniprot No.</b>	P01033
<b>Immunogen</b>	Human Timp 1
<b>Raised In</b>	mouse
<b>Species Reactivity</b>	Human,Mouse
<b>Specificity</b>	specific for Human Timp1 denatured and native forms
<b>Tested Applications</b>	ELISA,WB,IHC;Recommended dilution:WB:1:500-1:5000,IHC:1:50-1:500
<b>Relevance</b>	Complexes with metalloproteinases (such as collagenases) and irreversibly inactivates them by binding to their catalytic zinc cofactor. Also mediates erythropoiesis in vitro; but, unlike IL-3, it is species-specific, stimulating the growth and differentiation of only human and murine erythroid progenitors.
<b>Form</b>	liquid
<b>Conjugate</b>	Non-conjugated
<b>Storage Buffer</b>	Preservative: 0.03% Proclin 300 Constituents: 50% Glycerol, 0.01M PBS, PH 7.4
<b>Purification Method</b>	>95%, Protein G purified
<b>Isotype</b>	IgG2a
<b>Clonality</b>	monoclonal
<b>Alias</b>	Clgi antibody; Collagenase inhibitor antibody; Collagenase inhibitor; Human antibody; EPA antibody; EPO antibody; Erythroid Potentiating Activity antibody; Erythroid-potentiating activity antibody; Fibroblast collagenase inhibitor antibody; FLJ90373 antibody; HCI antibody; Human Collagenase Inhibitor antibody; Metalloproteinase inhibitor 1 antibody; Metalloproteinase inhibitor 1 precursor antibody; OTTHUMP00000023214 antibody; TIMP 1 antibody; TIMP antibody; TIMP metalloproteinase inhibitor 1 antibody; TIMP-1 antibody; Timp1 antibody; TIMP1 protein antibody; TIMP1_HUMAN antibody; Tissue Inhibitor of Metalloproteinase 1 antibody; Tissue inhibitor of metalloproteinases 1 antibody; Tissue inhibitor of metalloproteinases antibody; Tissue inhibitor of metalloproteinase 1 erythroid potentiating activity collagenase inhibitor antibody
<b>Product Type</b>	Monoclonal Antibody
<b>Accession NO.</b>	8B4E9
<b>Image</b>	



All lanes: Mouse anti-Human Timp1 monoclonal antibody at 1 $\mu$ g/ml  
Lane 1: HepG-2 cell lysate  
Predicted band size : 23 kDa  
Observed band size : 23 kDa  
Additional bands at:50KD



All lanes: Mouse anti-Human Timp1 monoclonal antibody at 1 $\mu$ g/ml  
Lane 1: TIMP1 transfected pichia Yeast cell lysate  
Predicted band size : 23 kDa  
Observed band size:23 kDa



Immunohistochemistry of paraffin-embedded human prostate cancer using CSB-MA0235601A0m at dilution of 1:100