

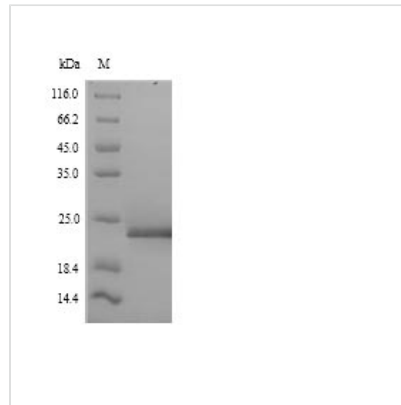


# Recombinant Arabidopsis thaliana FACT complex subunit SPT16 (SPT16), partial

<b>Product Code</b>	CSB-YP022955DOA
<b>Relevance</b>	Component of the FACT complex, a general chromatin factor that acts to reorganize nucleosomes. The FACT complex is involved in multiple processes that require DNA as a template such as mRNA elongation, DNA replication and DNA repair. During transcription elongation the FACT complex acts as a histone chaperone that both destabilizes and restores nucleosomal structure. It facilitates the passage of RNA polymerase II and transcription by promoting the dissociation of one histone H2A-H2B dimer from the nucleosome, then subsequently promotes the reestablishment of the nucleosome following the passage of RNA polymerase II (Probable).
<b>Abbreviation</b>	Recombinant Mouse-ear cress SPT16 protein, partial
<b>Storage</b>	The shelf life is related to many factors, storage state, buffer ingredients, storage temperature and the stability of the protein itself. Generally, the shelf life of liquid form is 6 months at -20°C/-80°C. The shelf life of lyophilized form is 12 months at -20°C/-80°C.
<b>Uniprot No.</b>	O82491
<b>Alias</b>	Facilitates chromatin transcription complex subunit SPT16
<b>Product Type</b>	Recombinant Protein
<b>Immunogen Species</b>	Arabidopsis thaliana (Mouse-ear cress)
<b>Purity</b>	≥ 90% as determined by SDS-PAGE.
<b>Sequence</b>	DFKKDVLRVDSVPTSSLEGIKEWLDTTDIKYYESKLNLNWRQILKTITDDPQSFI DDGGWEFLNLDGSDSESGGSEESDKGYEPSDVEVESESEDEASESESLVES DDDEEEDSEQESEEEKGKTWDELEREATNADREHGVESDSEEERKRRKMKA FGKSRPGTSGGGGSSSMKNMPPSKRKHR
<b>Research Area</b>	Developmental Biology
<b>Source</b>	Yeast
<b>Target Names</b>	SPT16
<b>Protein Names</b>	Recommended name: FACT complex subunit SPT16 Alternative name(s): Facilitates chromatin transcription complex subunit SPT16
<b>Expression Region</b>	890-1074aa
<b>Notes</b>	Repeated freezing and thawing is not recommended. Store working aliquots at 4°C for up to one week.
<b>Tag Info</b>	N-terminal 6xHis-tagged
<b>Mol. Weight</b>	22.9kDa
<b>Protein Length</b>	Partial



## Image



(Tris-Glycine gel) Discontinuous SDS-PAGE (reduced) with 5% enrichment gel and 15% separation gel.

## Reconstitution

We recommend that this vial be briefly centrifuged prior to opening to bring the contents to the bottom. Please reconstitute protein in deionized sterile water to a concentration of 0.1-1.0 mg/mL. We recommend to add 5-50% of glycerol (final concentration) and aliquot for long-term storage at -20°C/-80°C. Our default final concentration of glycerol is 50%. Customers could use it as reference.

## Shelf Life

The shelf life is related to many factors, storage state, buffer ingredients, storage temperature and the stability of the protein itself.

Generally, the shelf life of liquid form is 6 months at -20°C/-80°C. The shelf life of lyophilized form is 12 months at -20°C/-80°C.