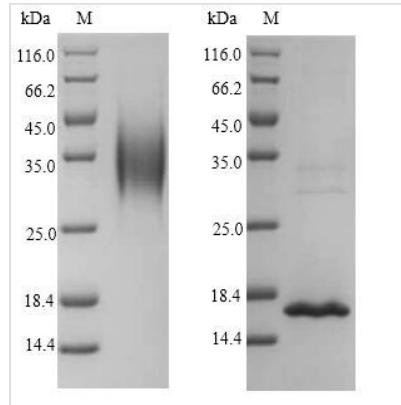




Recombinant *Macaca fascicularis* Interleukin-4 (IL4)

Product Code	CSB-YP301281MOV
Relevance	Participates in at least several B-cell activation processes as well as of other cell types. It is a costimulator of DNA-synthesis. It induces the expression of class II MHC molecules on resting B-cells. It enhances both secretion and cell surface expression of IgE and IgG1. It also regulates the expression of the low affinity Fc receptor for IgE (CD23) on both lymphocytes and monocytes. Positively regulates IL31RA expression in macrophages.
Abbreviation	Recombinant Cynomolgus monkey IL4 protein
Storage	The shelf life is related to many factors, storage state, buffer ingredients, storage temperature and the stability of the protein itself. Generally, the shelf life of liquid form is 6 months at -20°C/-80°C. The shelf life of lyophilized form is 12 months at -20°C/-80°C.
Uniprot No.	P79339
Product Type	Recombinant Proteins
Immunogen Species	<i>Macaca fascicularis</i> (Crab-eating macaque) (Cynomolgus monkey)
Purity	≥ 90% as determined by SDS-PAGE.
Sequence	HKCDITLQEIIKTLNSLTEQKTLCTKLTITDILAASKNTTEKETFCRAATVLRQFYS HHEKDTRCLGATAQQFHRHKQLIRFLKRLDRNLWGLAGLNSCPVKEANQSTL ENFLERLKTIMREKYSKCSS
Research Area	Immunology
Source	Yeast
Target Names	IL4
Protein Names	Recommended name: Interleukin-4 Short name= IL-4Alternative name(s): B-cell stimulatory factor 1 Short name= BSF-1 Lymphocyte stimulatory factor 1
Expression Region	25-153aa
Notes	Repeated freezing and thawing is not recommended. Store working aliquots at 4°C for up to one week.
Tag Info	N-terminal 6xHis-tagged
Mol. Weight	16.9kDa
Protein Length	Full Length of Mature Protein
Image	

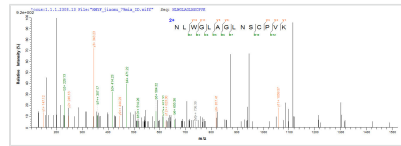


(Tris-Glycine gel) Discontinuous SDS-PAGE (reduced) with 5% enrichment gel and 15% separation gel.

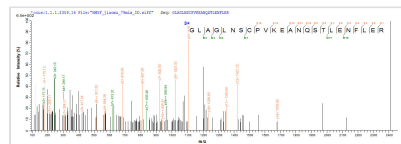
Left. 35 kDa.

Right. 16.9 kDa by EndoH digestion

The reducing (R) protein migrates as 35 kDa in SDS-PAGE due to glycosylation.



Based on the SEQUEST from database of Yeast host and target protein, the LC-MS/MS Analysis result of CSB-YP301281MOV could indicate that this peptide derived from Yeast-expressed *Macaca fascicularis* (Crab-eating macaque) (Cynomolgus monkey) IL4.



Based on the SEQUEST from database of Yeast host and target protein, the LC-MS/MS Analysis result of CSB-YP301281MOV could indicate that this peptide derived from Yeast-expressed *Macaca fascicularis* (Crab-eating macaque) (Cynomolgus monkey) IL4.

Shelf Life

The shelf life is related to many factors, storage state, buffer ingredients, storage temperature and the stability of the protein itself.

Generally, the shelf life of liquid form is 6 months at -20°C/-80°C. The shelf life of lyophilized form is 12 months at -20°C/-80°C.